

**SCREENING REPORT FOR AN ENVIRONMENTAL AUTHORIZATION AS
REQUIRED BY THE 2014 EIA REGULATIONS – PROPOSED SITE
ENVIRONMENTAL SENSITIVITY**

EIA Reference number:

Project name: ZEE Minerals

Project title: Prospecting Right Application

Date screening report generated: 10/11/2023 14:10:56

Applicant: ZEE Minerals (Pty) LTD

Compiler: Olwethu Phungula

Compiler signature:



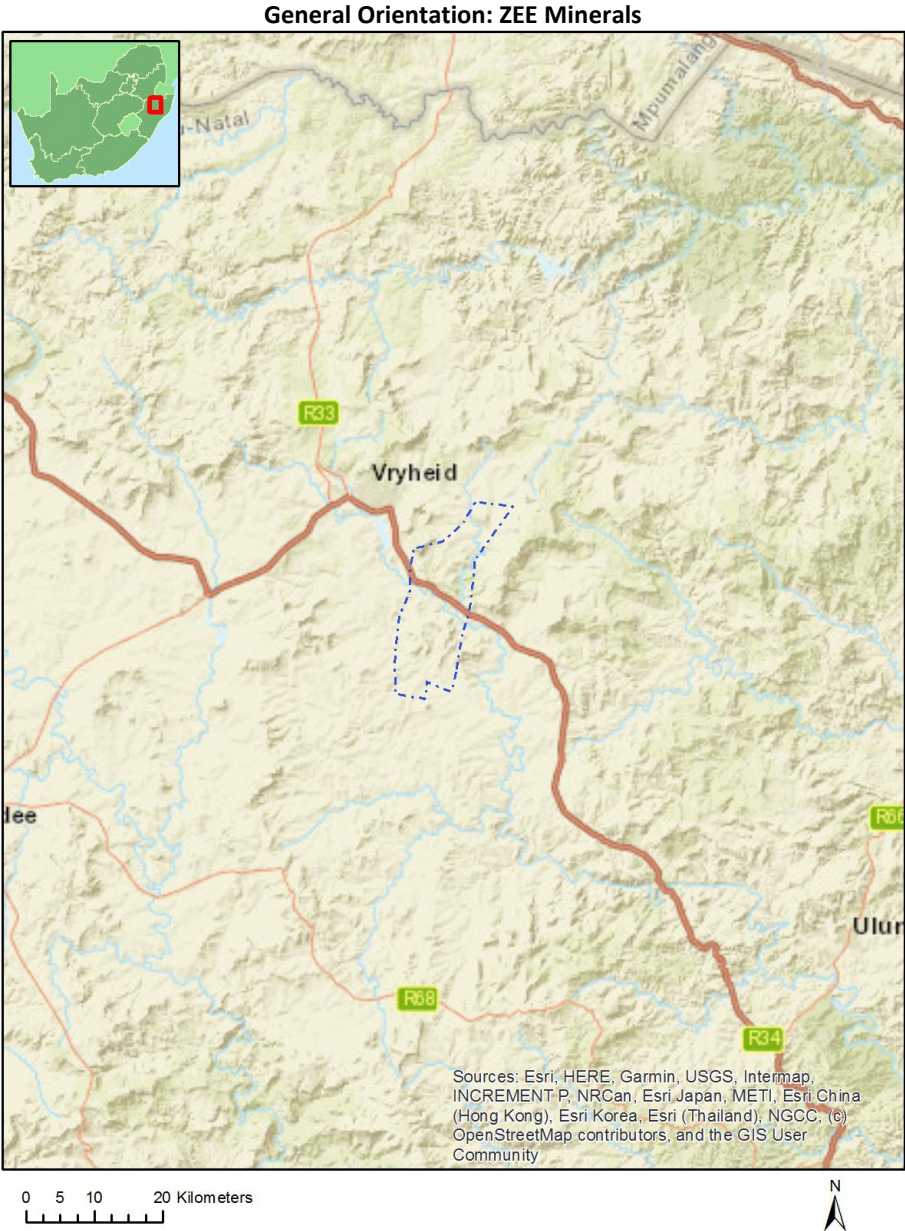
Application Category: Mining|Prospecting rights

Table of Contents

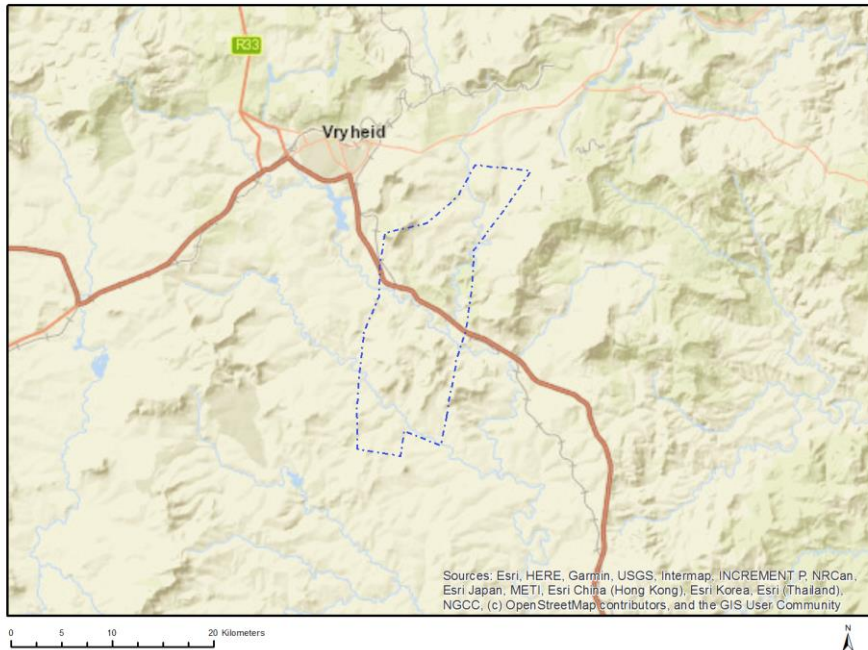
- Proposed Project Location 3
 - Orientation map 1: General location 3
- Map of proposed site and relevant area(s) 4
 - Cadastral details of the proposed site 4
 - Wind and Solar developments with an approved Environmental Authorisation or applications under consideration within 30 km of the proposed area 6
 - Environmental Management Frameworks relevant to the application 6
- Environmental screening results and assessment outcomes 7
 - Relevant development incentives, restrictions, exclusions or prohibitions 7
 - Proposed Development Area Environmental Sensitivity 7
 - Specialist assessments identified 7
- Results of the environmental sensitivity of the proposed area 9
 - MAP OF RELATIVE AGRICULTURE THEME SENSITIVITY 9
 - MAP OF RELATIVE ANIMAL SPECIES THEME SENSITIVITY 10
 - MAP OF RELATIVE AQUATIC BIODIVERSITY THEME SENSITIVITY 11
 - MAP OF RELATIVE ARCHAEOLOGICAL AND CULTURAL HERITAGE THEME SENSITIVITY 12
 - MAP OF RELATIVE CIVIL AVIATION THEME SENSITIVITY 13
 - MAP OF RELATIVE DEFENCE THEME SENSITIVITY 14
 - MAP OF RELATIVE PALEONTOLOGY THEME SENSITIVITY 15
 - MAP OF RELATIVE PLANT SPECIES THEME SENSITIVITY 16
 - MAP OF RELATIVE TERRESTRIAL BIODIVERSITY THEME SENSITIVITY 17

Proposed Project Location

Orientation map 1: General location



Map of proposed site and relevant area(s)



Cadastral details of the proposed site

Property details:

No	Farm Name	Farm/ Erf No	Portion	Latitude	Longitude	Property Type
1	NOOITGEDACHT	278	0	27°46'42.85S	30°54'41.74E	Farm
2	WELTEVREDEN	371	0	27°50'38.34S	30°53'41.27E	Farm
3	WELGELEGEN	438	0	27°59'3.18S	30°53'7.33E	Farm
4	WELTEVREDEN	17747	0	27°51'33.57S	30°53'41.25E	Farm
5	BRAKSPRUIT	369	0	28°1'42.9S	30°50'28.7E	Farm
6	WATERVAL	420	0	28°0'19.38S	30°48'43.64E	Farm
7	SPITSKOP	495	0	28°1'12.72S	30°52'43.61E	Farm
8	BLOEMHOF	127	0	27°48'41.56S	30°59'6.22E	Farm
9	STERKSTROOM A	344	0	27°46'28.47S	30°58'13.19E	Farm
10	BRAKSPRUIT	485	0	27°58'20.97S	30°48'34.97E	Farm
11	LANGVERWACHT	17050	0	27°56'11.18S	30°50'47.95E	Farm
12		17362	0	27°54'31.13S	30°51'21.76E	Farm
13	DOORNHOEK	340	0	27°53'59.25S	30°53'11.24E	Farm
14	DOORNHOEK	340	0	27°53'24.02S	30°54'9.57E	Farm
15	BRANDKRAAL	505	0	27°56'13.85S	30°56'6.79E	Farm
16	GOLDEN VALLEY	751	0	27°49'55.24S	30°54'53.89E	Farm
17	VAALBANK	224	0	27°51'12.01S	30°49'55.34E	Farm
18	METSELFONTEIN	379	0	27°59'50.24S	30°50'47.44E	Farm
19	VERGENOEG	570	0	28°0'25.34S	30°55'27.39E	Farm
20	BEAUFORT	787	0	27°49'44.62S	30°50'18.89E	Farm
21	VAALKOP	17046	0	27°50'9.53S	30°56'3.37E	Farm
22	BELLEVUE	17048	0	27°50'28.72S	30°57'47.5E	Farm
23	SHOBA	17748	0	27°52'4.04S	30°54'54.13E	Farm
24	WELGEVONDEN	350	0	27°52'40.76S	30°51'43.68E	Farm
25	WIEMANS RUST	549	0	27°55'17.52S	30°53'39.96E	Farm
26	DASSIESHOOGTE	843	0	27°53'26.74S	30°52'11.06E	Farm
27	BERGENDAL	17047	0	27°48'0.04S	30°53'55.25E	Farm

28	UMVELOOSIDRIFT	17054	0	27°58'19.79S	30°55'50.12E	Farm
29	ONVERWACHT	169	0	27°51'6.15S	30°52'3.5E	Farm
30	VAALKOP	228	0	27°58'0.33S	30°50'50.3E	Farm
31	SCHUILHOEK	243	0	27°49'27.02S	30°52'47.15E	Farm
32	UITVLUCHT	319	0	27°48'14.93S	30°56'46.84E	Farm
33	GOED HOOP	431	0	27°52'17.78S	30°56'51.82E	Farm
34	BRAK FONTEIN	477	0	27°54'39.03S	30°48'58.94E	Farm
35	BRAKPAN	389	0	27°57'5.93S	30°53'14.39E	Farm
36	TINTA'S DRIFT	482	0	27°52'44.41S	30°49'26.88E	Farm
37	STERKSTROOM B	720	0	27°46'45.93S	30°56'48.36E	Farm
38	WIEMANS RUST	876	0	27°54'11.08S	30°53'36.78E	Farm
39	GROENKOP	17055	0	27°54'12.67S	30°56'35.49E	Farm
40	VAALBANK	224	1	27°51'31S	30°50'29.58E	Farm Portion
41	BLOEMHOF	127	1	27°49'19.7S	30°58'26.44E	Farm Portion
42	SCHUILHOEK	243	0	27°49'34.71S	30°52'55.49E	Farm Portion
43	UITVLUCHT	319	1	27°48'33.12S	30°57'17.54E	Farm Portion
44	UITVLUCHT	319	4	27°48'47.02S	30°55'58.27E	Farm Portion
45	GOED HOOP	431	5	27°51'28.76S	30°56'9.34E	Farm Portion
46	TINTA'S DRIFT	482	0	27°52'17.54S	30°49'59.34E	Farm Portion
47	WIEMANS RUST	549	1	27°55'28.45S	30°53'54.84E	Farm Portion
48	WELGEVONDEN	350	5	27°53'9.53S	30°51'10.27E	Farm Portion
49	METSELFONTEIN	379	1	27°59'8.9S	30°51'25.79E	Farm Portion
50	METSELFONTEIN	379	3	28°0'22.89S	30°50'36.38E	Farm Portion
51	BRAKPAN	389	1	27°56'37.87S	30°53'9.43E	Farm Portion
52	BRAKPAN	389	4	27°57'38.38S	30°54'3.42E	Farm Portion
53	WATERVAL	420	4	28°0'26.69S	30°49'8.43E	Farm Portion
54	ONVERWACHT	169	2	27°51'13.17S	30°51'31.02E	Farm Portion
55	VAALBANK	224	5	27°51'1.13S	30°50'35.76E	Farm Portion
56	VAALKOP	228	1	27°58'31.87S	30°51'7.24E	Farm Portion
57	NOOITGEDACHT	278	14	27°46'58.28S	30°55'18.73E	Farm Portion
58	UITVLUCHT	319	1	27°48'49.64S	30°55'23.66E	Farm Portion
59	DOORNHOEK	340	0	27°53'40.44S	30°54'34.44E	Farm Portion
60	DOORNHOEK	340	3	27°53'59.25S	30°53'11.24E	Farm Portion
61	GOLDEN VALLEY	751	2	27°50'22.14S	30°54'34.32E	Farm Portion
62	GOLDEN VALLEY	751	3	27°49'26S	30°55'15.16E	Farm Portion
63	DASSIESHOOGTE	843	0	27°53'26.74S	30°52'11.06E	Farm Portion
64	WIEMANS RUST	876	0	27°54'11.08S	30°53'36.78E	Farm Portion
65	GOED HOOP	431	2	27°52'30.58S	30°56'27.83E	Farm Portion
66	WELGELEGEN	438	2	27°58'31.44S	30°53'50.12E	Farm Portion
67	BRANDKRAAL	505	3	27°56'36.52S	30°55'8.66E	Farm Portion
68	WELTEVREDEN	17747	0	27°51'33.57S	30°53'41.25E	Farm Portion
69	VAALKOP	228	2	27°58'24.07S	30°49'49.42E	Farm Portion
70	UITVLUCHT	319	0	27°47'40.24S	30°57'34.84E	Farm Portion
71	DOORNHOEK	340	1	27°52'51.08S	30°53'19.68E	Farm Portion
72	BRAKSPRUIT	369	0	28°1'5.49S	30°50'44.04E	Farm Portion
73	METSELFONTEIN	379	0	27°59'49.02S	30°49'48.36E	Farm Portion
74	WATERVAL	420	2	27°59'30.54S	30°49'8.51E	Farm Portion
75	WELGELEGEN	438	1	27°58'11.21S	30°52'58.72E	Farm Portion
76	BRANDKRAAL	505	0	27°55'35.15S	30°56'18.58E	Farm Portion
77	VERGENOEG	570	3	28°0'45.52S	30°54'26.73E	Farm Portion
78	STERKSTROOM B	720	0	27°46'56.84S	30°57'24.8E	Farm Portion
79	BERGENDAL	17047	2	27°48'23.15S	30°54'28.03E	Farm Portion
80	WELTEVREDEN	371	5	27°50'42.37S	30°53'41.53E	Farm Portion
81	METSELFONTEIN	379	2	27°59'35.45S	30°50'36.98E	Farm Portion
82	METSELFONTEIN	379	4	27°59'48.51S	30°50'3.76E	Farm Portion
83	BRAKPAN	389	3	27°57'31S	30°52'48.11E	Farm Portion
84	BRAK FONTEIN	477	0	27°54'55.2S	30°48'54.08E	Farm Portion
85	BRAK FONTEIN	477	2	27°54'0.67S	30°49'41.22E	Farm Portion
86	BRAKSPRUIT	485	6	27°58'10.94S	30°49'14.16E	Farm Portion
87	BRAKSPRUIT	485	8	27°57'42.9S	30°48'25.96E	Farm Portion

88	BELLEVUE	17048	2	27°49'57.29S	30°58'10.53E	Farm Portion
89	UMVELOOSIDRIFT	17054	6	27°57'48.14S	30°55'5.35E	Farm Portion
90	VERGENOEG	570	0	27°59'41.85S	30°54'38.44E	Farm Portion
91	BELLEVUE	17048	1	27°51'13.97S	30°57'16.09E	Farm Portion
92	UMVELOOSIDRIFT	17054	5	27°58'36.11S	30°54'27.33E	Farm Portion
93		17362	0	27°54'31.13S	30°51'21.76E	Farm Portion
94	LANGVERWACHT	17050	0	27°56'11.18S	30°50'47.95E	Farm Portion
95	ONVERWACHT	169	3	27°51'37.95S	30°52'13.8E	Farm Portion
96	UITVLUCHT	319	2	27°48'10.28S	30°55'39.12E	Farm Portion
97	UITVLUCHT	319	3	27°47'50.92S	30°56'28.16E	Farm Portion
98	WELGELEGEN	438	4	27°58'58.55S	30°52'28.81E	Farm Portion
99	WIEMANS RUST	549	3	27°55'34.72S	30°54'39.73E	Farm Portion
100	SHOBA	17748	0	27°52'4.04S	30°54'54.13E	Farm Portion
101	ONVERWACHT	169	1	27°50'53.94S	30°52'38.93E	Farm Portion
102	VAALKOP	228	0	27°57'33.72S	30°50'57.91E	Farm Portion
103	METSELFONTEIN	379	5	28°0'0.2S	30°51'30.76E	Farm Portion
104	GOED HOOP	431	1	27°52'7.01S	30°56'14.06E	Farm Portion
105	WELGELEGEN	438	3	27°59'29.33S	30°53'29.82E	Farm Portion
106	STERKSTROOM A	344	4	27°47'11.1S	30°58'35.12E	Farm Portion
107	WELGEVONDEN	350	6	27°52'29.1S	30°51'57.21E	Farm Portion
108	METSELFONTEIN	379	6	28°0'23.19S	30°50'37.77E	Farm Portion
109	BRAKSPRUIT	485	2	27°58'59.31S	30°49'11.72E	Farm Portion
110	SPITSKOP	495	1	28°0'36.65S	30°52'20.44E	Farm Portion
111	WIEMANS RUST	549	0	27°55'3.01S	30°53'1.41E	Farm Portion
112	STERKSTROOM B	720	1	27°46'39.52S	30°56'17.66E	Farm Portion
113	VAALKOP	17046	0	27°50'9.53S	30°56'3.37E	Farm Portion
114	BERGENDAL	17047	1	27°47'37.59S	30°55'2.41E	Farm Portion
115	BELLEVUE	17048	0	27°50'43.14S	30°57'37.01E	Farm Portion
116	GROENKOP	17055	1	27°54'14.32S	30°55'34.48E	Farm Portion
117	STERKSTROOM B	720	2	27°46'39.28S	30°56'48.93E	Farm Portion
118	BEAUFORT	787	1	27°49'44.54S	30°50'46.56E	Farm Portion

Development footprint¹ vertices:
No development footprint(s) specified.

Wind and Solar developments with an approved Environmental Authorisation or applications under consideration within 30 km of the proposed area

No	EIA Reference No	Classification	Status of application	Distance from proposed area (km)
1	12/12/20/2475	Solar PV	Approved	4

Environmental Management Frameworks relevant to the application

No intersections with EMF areas found.

¹ “development footprint”, means the area within the site on which the development will take place and includes all ancillary developments for example roads, power lines, boundary walls, paving etc. which require vegetation clearance or which will be disturbed and for which the application has been submitted.

Environmental screening results and assessment outcomes

The following sections contain a summary of any development incentives, restrictions, exclusions or prohibitions that apply to the proposed development site as well as the most environmental sensitive features on the site based on the site sensitivity screening results for the application classification that was selected. The application classification selected for this report is:

Mining | Prospecting rights.

Relevant development incentives, restrictions, exclusions or prohibitions

The following development incentives, restrictions, exclusions or prohibitions and their implications that apply to this site are indicated below.

Incentive, restriction or prohibition	Implication
Strategic Gas Pipeline Corridors-Phase 3: Richards Bay to Gauteng	https://screening.environment.gov.za/ScreeningDownloads/DevelopmentZones/Combined_GAS.pdf

Proposed Development Area Environmental Sensitivity

The following summary of the development site environmental sensitivities is identified. Only the highest environmental sensitivity is indicated. The footprint environmental sensitivities for the proposed development footprint as identified, are indicative only and must be verified on site by a suitably qualified person before the specialist assessments identified below can be confirmed.

Theme	Very High sensitivity	High sensitivity	Medium sensitivity	Low sensitivity
Agriculture Theme	X			
Animal Species Theme		X		
Aquatic Biodiversity Theme	X			
Archaeological and Cultural Heritage Theme	X			
Civil Aviation Theme			X	
Defence Theme				X
Paleontology Theme	X			
Plant Species Theme			X	
Terrestrial Biodiversity Theme	X			

Specialist assessments identified

Based on the selected classification, and the known impacts associated with the proposed development, the following list of specialist assessments have been identified for inclusion in the assessment report. It is the responsibility of the EAP to confirm this list and to motivate in the assessment report, the reason for not including any of the identified specialist study including the provision of photographic evidence of the site situation.

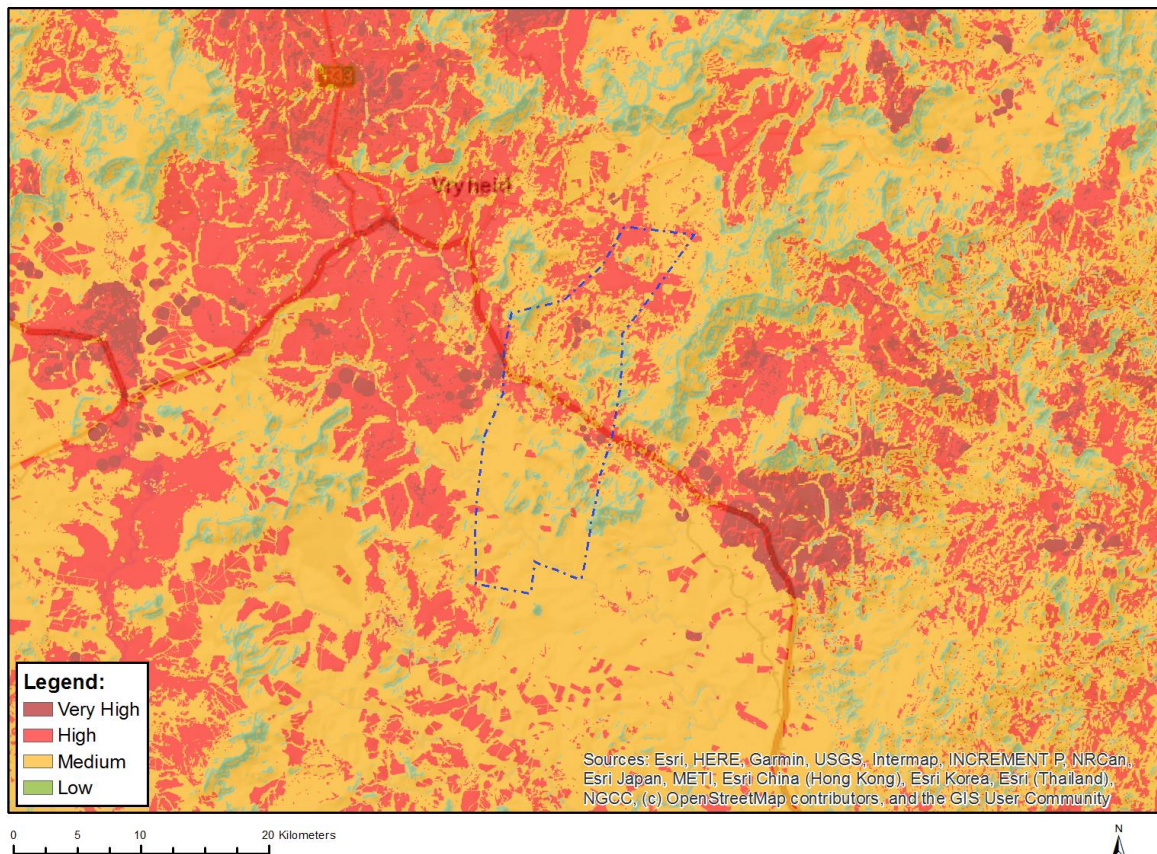
No	Specialist assessment	Assessment Protocol
1	Agricultural Impact Assessment	https://screening.environment.gov.za/ScreeningDownloads/AssessmentProtocols/Gazetted_General_Agriculture_Assessment_Pro

		tocols.pdf
2	Archaeological and Cultural Heritage Impact Assessment	https://screening.environment.gov.za/ScreeningDownloads/AssessmentProtocols/Gazetted_General_Requirement_Assessment_Protocols.pdf
3	Palaeontology Impact Assessment	https://screening.environment.gov.za/ScreeningDownloads/AssessmentProtocols/Gazetted_General_Requirement_Assessment_Protocols.pdf
4	Terrestrial Biodiversity Impact Assessment	https://screening.environment.gov.za/ScreeningDownloads/AssessmentProtocols/Gazetted_Terrestrial_Biodiversity_Assessment_Protocols.pdf
5	Aquatic Biodiversity Impact Assessment	https://screening.environment.gov.za/ScreeningDownloads/AssessmentProtocols/Gazetted_Aquatic_Biodiversity_Assessment_Protocols.pdf
6	Noise Impact Assessment	https://screening.environment.gov.za/ScreeningDownloads/AssessmentProtocols/Gazetted_Noise_Impacts_Assessment_Protocol.pdf
7	Radioactivity Impact Assessment	https://screening.environment.gov.za/ScreeningDownloads/AssessmentProtocols/Gazetted_General_Requirement_Assessment_Protocols.pdf
8	Plant Species Assessment	https://screening.environment.gov.za/ScreeningDownloads/AssessmentProtocols/Gazetted_Plant_Species_Assessment_Protocols.pdf
9	Animal Species Assessment	https://screening.environment.gov.za/ScreeningDownloads/AssessmentProtocols/Gazetted_Animal_Species_Assessment_Protocols.pdf

Results of the environmental sensitivity of the proposed area.

The following section represents the results of the screening for environmental sensitivity of the proposed site for relevant environmental themes associated with the project classification. It is the duty of the EAP to ensure that the environmental themes provided by the screening tool are comprehensive and complete for the project. Refer to the disclaimer.

MAP OF RELATIVE AGRICULTURE THEME SENSITIVITY



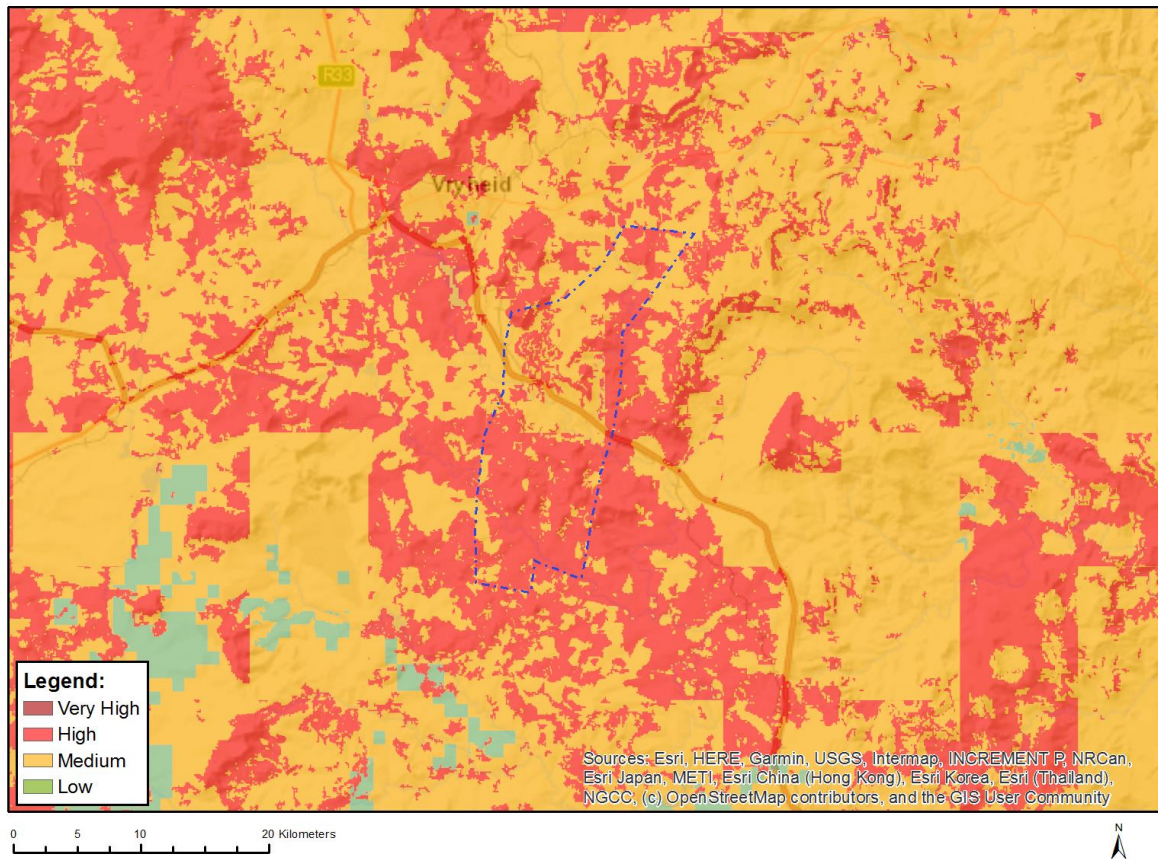
Very High sensitivity	High sensitivity	Medium sensitivity	Low sensitivity
X			

Sensitivity Features:

Sensitivity	Feature(s)
High	Land capability;09. Moderate-High/10. Moderate-High
High	Annual Crop Cultivation / Planted Pastures Rotation;Land capability;06. Low-Moderate/07. Low-Moderate/08. Moderate
High	Annual Crop Cultivation / Planted Pastures Rotation;Land capability;09. Moderate-High/10. Moderate-High
High	Subsistence Farming 1;Land capability;06. Low-Moderate/07. Low-Moderate/08. Moderate
High	Subsistence Farming 1;Land capability;09. Moderate-High/10. Moderate-High
High	Subsistence Farming 1;Land capability;01. Very low/02. Very low/03. Low-Very low/04. Low-Very low/05. Low
High	Annual Crop Cultivation / Planted Pastures Rotation;Land capability;01. Very low/02. Very low/03.

	Low-Very low/04. Low-Very low/05. Low
Low	Land capability;01. Very low/02. Very low/03. Low-Very low/04. Low-Very low/05. Low
Medium	Land capability;06. Low-Moderate/07. Low-Moderate/08. Moderate
Very High	Pivot Irrigation;Land capability;09. Moderate-High/10. Moderate-High
Very High	Pivot Irrigation;Land capability;06. Low-Moderate/07. Low-Moderate/08. Moderate

MAP OF RELATIVE ANIMAL SPECIES THEME SENSITIVITY



Where only a sensitive plant unique number or sensitive animal unique number is provided in the screening report and an assessment is required, the environmental assessment practitioner (EAP) or specialist is required to email SANBI at eiadatarequests@sanbi.org.za listing all sensitive species with their unique identifiers for which information is required. The name has been withheld as the species may be prone to illegal harvesting and must be protected. SANBI will release the actual species name after the details of the EAP or specialist have been documented.

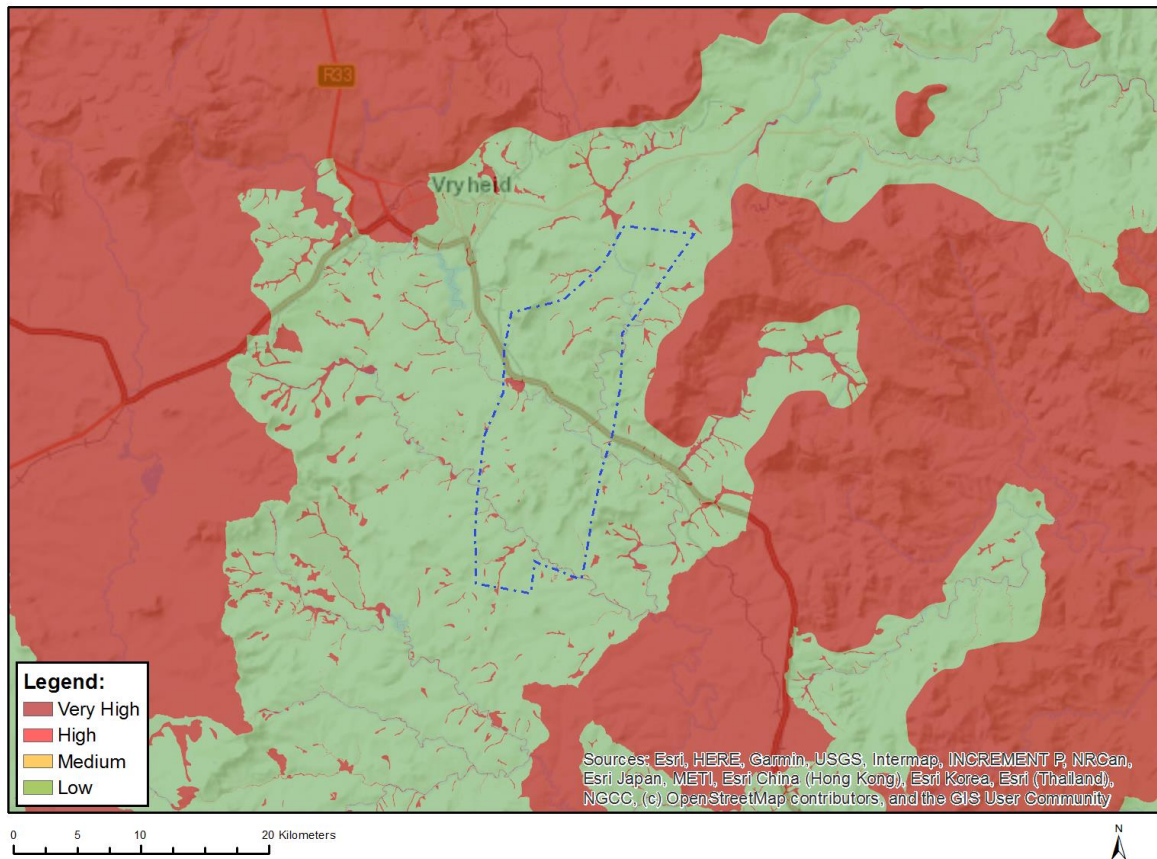
Very High sensitivity	High sensitivity	Medium sensitivity	Low sensitivity
	X		

Sensitivity Features:

Sensitivity	Feature(s)
High	Aves-Neotis denhami
High	Aves-Balearica regulorum
High	Aves-Falco biarmicus
High	Aves-Geronticus calvus
High	Aves-Circus ranivorus
High	Aves-Torgos tracheliotos
High	Aves-Sagittarius serpentarius

High	Aves-Bucorvus leadbeateri
High	Aves-Eupodotis senegalensis
High	Aves-Aquila rapax
High	Mammalia-Lycaon pictus
High	Mammalia-Hippopotamus amphibius
High	Mammalia-Ourebia ourebi ourebi
Medium	Aves-Podica senegalensis
Medium	Aves-Circus ranivorus
Medium	Aves-Stephanoaetus coronatus
Medium	Aves-Neotis denhami
Medium	Aves-Balearica regulorum
Medium	Aves-Sagittarius serpentarius
Medium	Aves-Aquila rapax
Medium	Aves-Eupodotis senegalensis
Medium	Mammalia-Chrysoxalax villosus
Medium	Mammalia-Hydrictis maculicollis
Medium	Mammalia-Ourebia ourebi ourebi
Medium	Sensitive species 8

MAP OF RELATIVE AQUATIC BIODIVERSITY THEME SENSITIVITY

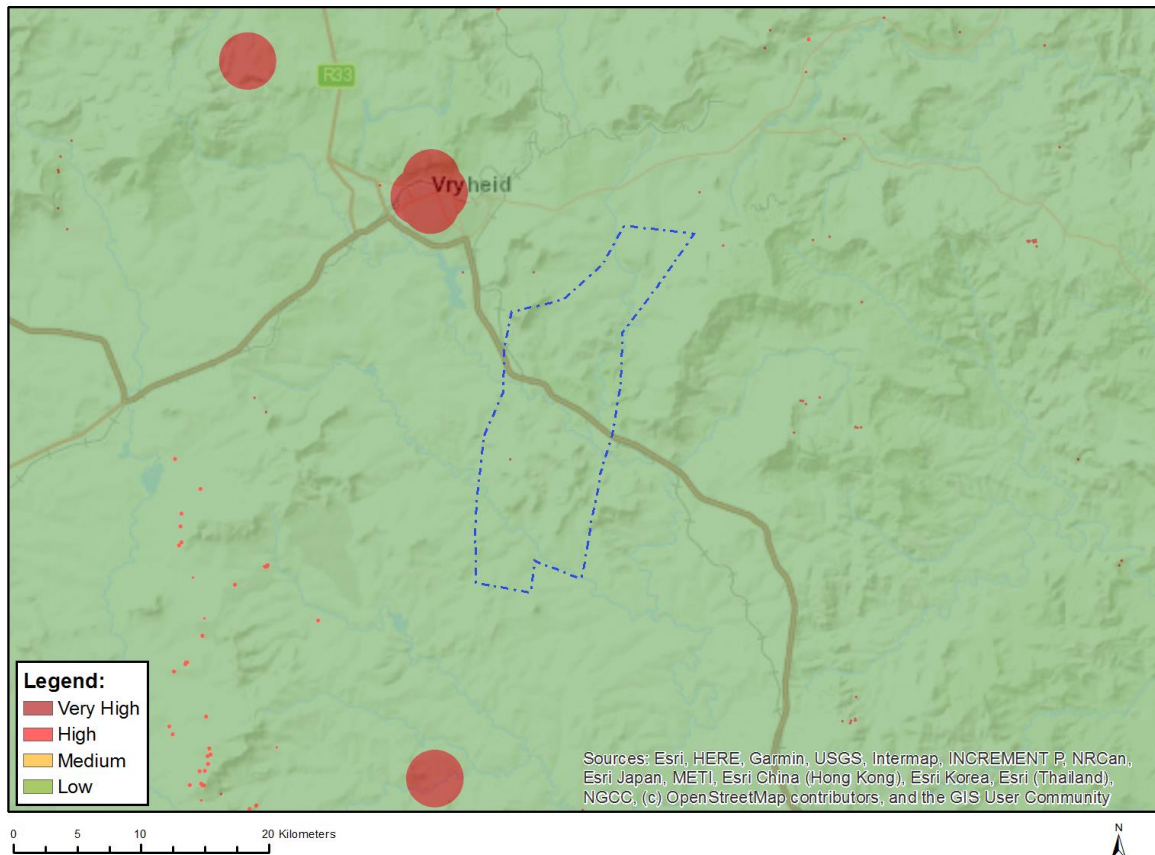


Very High sensitivity	High sensitivity	Medium sensitivity	Low sensitivity
X			

Sensitivity Features:

Sensitivity	Feature(s)
Low	Low sensitivity
Very High	Rivers_B
Very High	Rivers_C
Very High	Wetlands_(River)
Very High	Wetlands_Sub-Escarpment Grassland Bioregion (Depression)
Very High	Wetlands_Sub-Escarpment Grassland Bioregion (Seep)
Very High	Wetlands_Sub-Escarpment Grassland Bioregion (Valley-bottom)

MAP OF RELATIVE ARCHAEOLOGICAL AND CULTURAL HERITAGE THEME SENSITIVITY

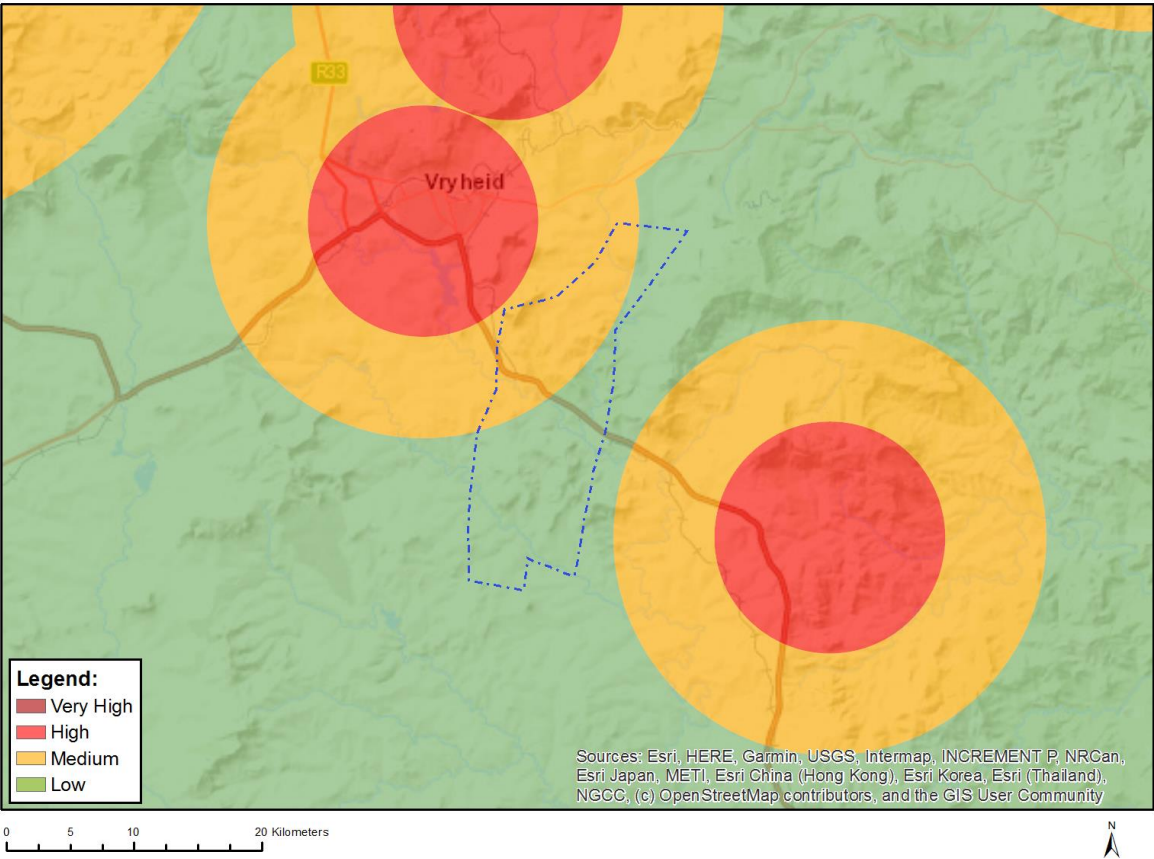


Very High sensitivity	High sensitivity	Medium sensitivity	Low sensitivity
X			

Sensitivity Features:

Sensitivity	Feature(s)
Low	Low sensitivity
Very High	Within 100m of an Ungraded Heritage site

MAP OF RELATIVE CIVIL AVIATION THEME SENSITIVITY

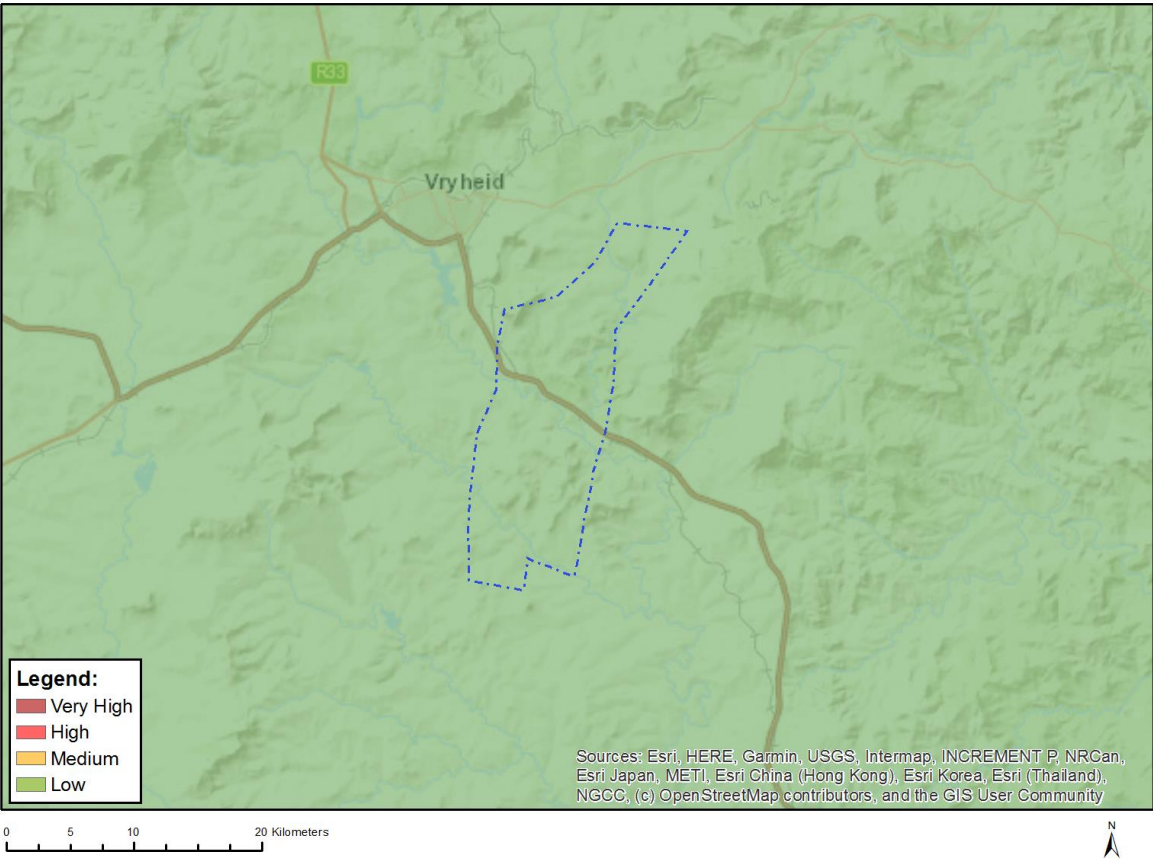


Very High sensitivity	High sensitivity	Medium sensitivity	Low sensitivity
		X	

Sensitivity Features:

Sensitivity	Feature(s)
Low	Low sensitivity
Medium	Between 8 and 15 km of other civil aviation aerodrome

MAP OF RELATIVE DEFENCE THEME SENSITIVITY

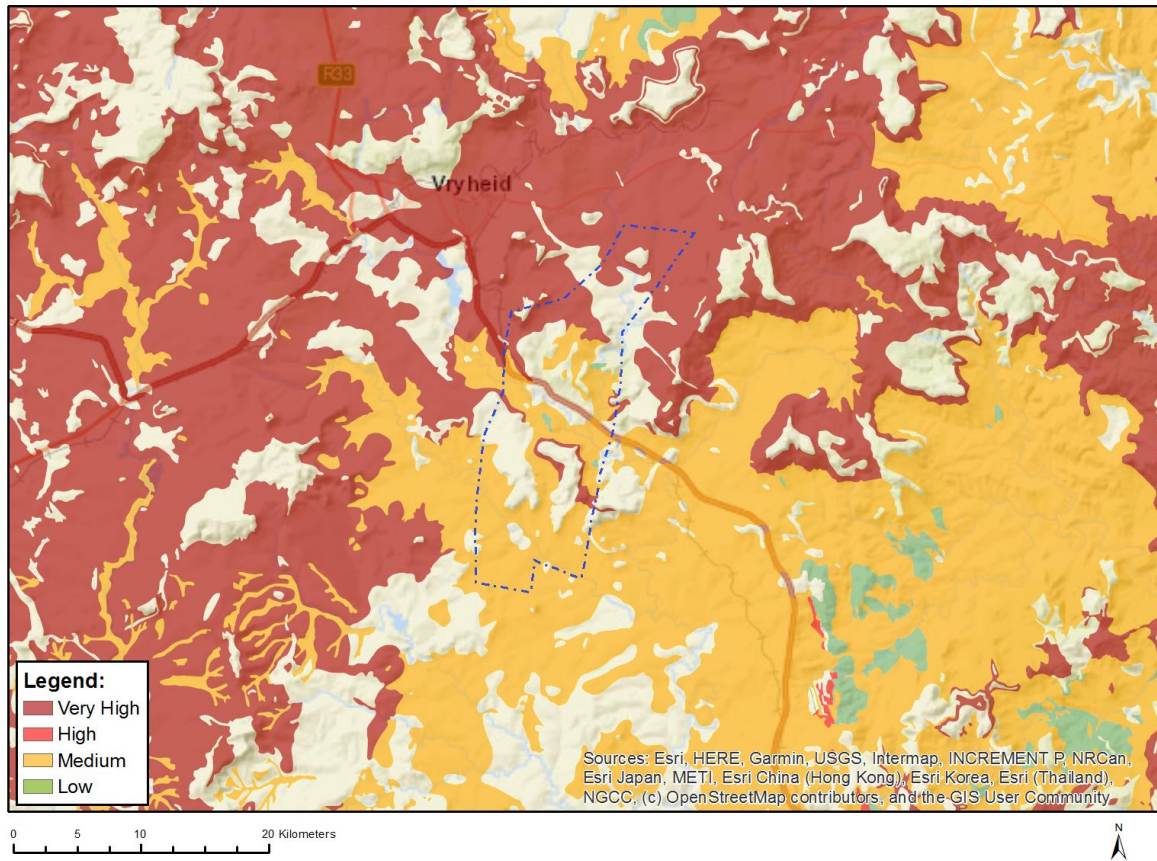


Very High sensitivity	High sensitivity	Medium sensitivity	Low sensitivity
			X

Sensitivity Features:

Sensitivity	Feature(s)
Low	Low Sensitivity

MAP OF RELATIVE PALEONTOLOGY THEME SENSITIVITY

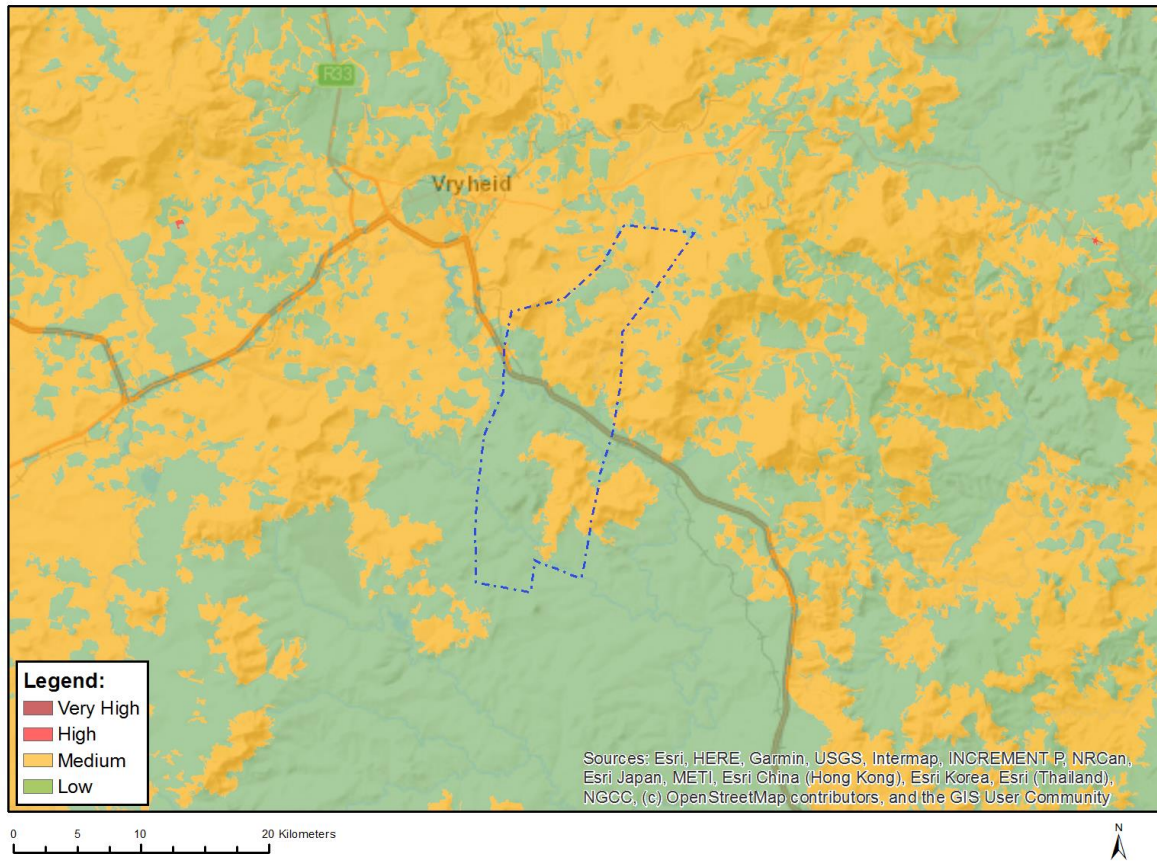


Very High sensitivity	High sensitivity	Medium sensitivity	Low sensitivity
X			

Sensitivity Features:

Sensitivity	Feature(s)
Low	Features with a Low paleontological sensitivity
Medium	Features with a Medium paleontological sensitivity
Very High	Features with a Very High paleontological sensitivity

MAP OF RELATIVE PLANT SPECIES THEME SENSITIVITY



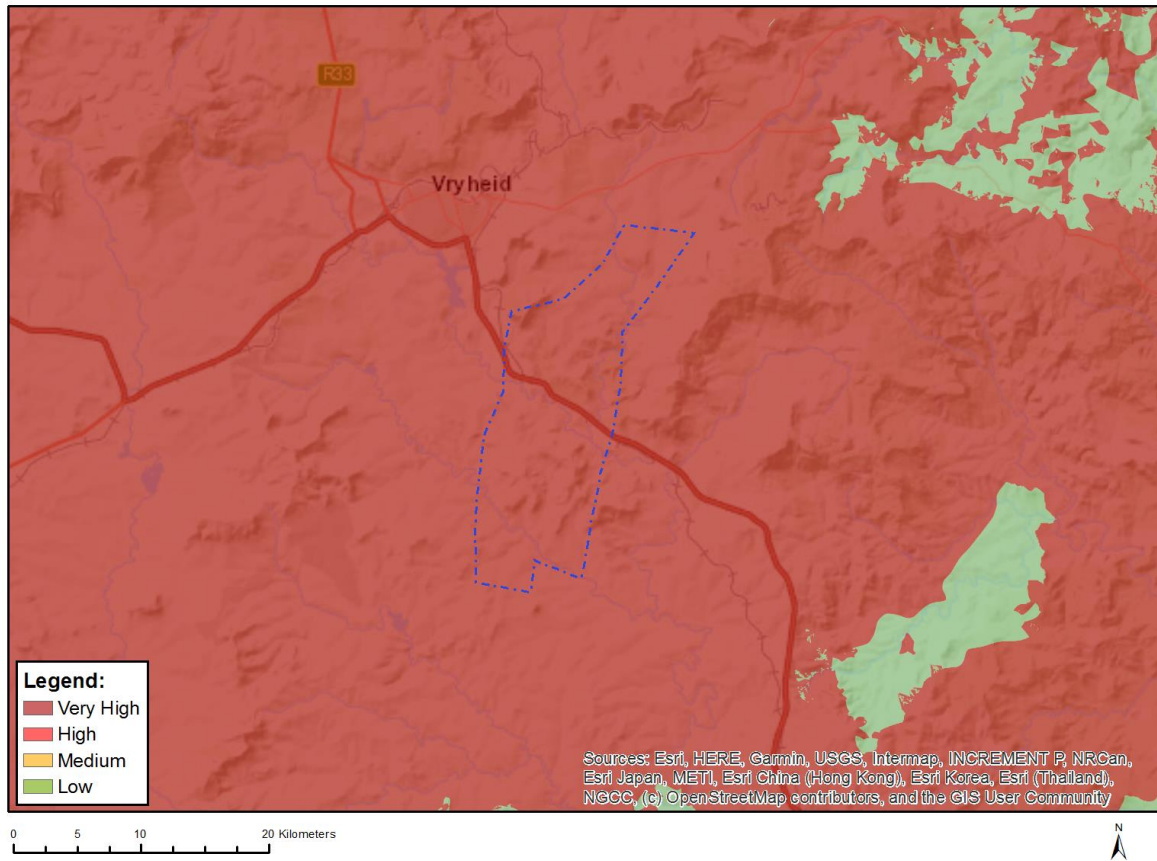
Where only a sensitive plant unique number or sensitive animal unique number is provided in the screening report and an assessment is required, the environmental assessment practitioner (EAP) or specialist is required to email SANBI at eiadatarequests@sanbi.org.za listing all sensitive species with their unique identifiers for which information is required. The name has been withheld as the species may be prone to illegal harvesting and must be protected. SANBI will release the actual species name after the details of the EAP or specialist have been documented.

Very High sensitivity	High sensitivity	Medium sensitivity	Low sensitivity
		X	

Sensitivity Features:

Sensitivity	Feature(s)
Low	Low Sensitivity
Medium	Sensitive species 1252
Medium	Dierama erectum
Medium	Sensitive species 998
Medium	Sensitive species 1152

MAP OF RELATIVE TERRESTRIAL BIODIVERSITY THEME SENSITIVITY



Very High sensitivity	High sensitivity	Medium sensitivity	Low sensitivity
X			

Sensitivity Features:

Sensitivity	Feature(s)
Very High	ESA
Very High	CBA: Optimal
Very High	CBA: Irreplaceable
Very High	National Protected Area Expansion Strategy (NPAES)
Very High	VU_Northern KwaZulu-Natal Moist Grassland
Very High	EN_Income Sandy Grassland