

Licebo Environmental and Mining (Pty) Ltd
Company Reg. Number: 2009/022180/07; VAT Number: 4170262838
Physical Address: 49 Centaury Avenue, Ben Fleur, eMalahleni, 1049
Contact Details: 013 692 0212 / 083 257 8869
E-mail Address: ralph.repinga@licebo.co.za



APPENDIX 7 SCREENING TOOL

**SCREENING REPORT FOR AN ENVIRONMENTAL AUTHORIZATION AS
REQUIRED BY THE 2014 EIA REGULATIONS – PROPOSED SITE
ENVIRONMENTAL SENSITIVITY**

EIA Reference number: LEM-A0681-08-2023

Project name: Khutala Colliary Irrigation WUL Application

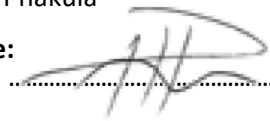
Project title: WUL Application for Irrigation with the mine affected water in line with the NWA.

Date screening report generated: 29/11/2023 16:01:14

Applicant: Seriti Power (Pty) Ltd.

Compiler: Hlulani Phakula

Compiler signature:



.....

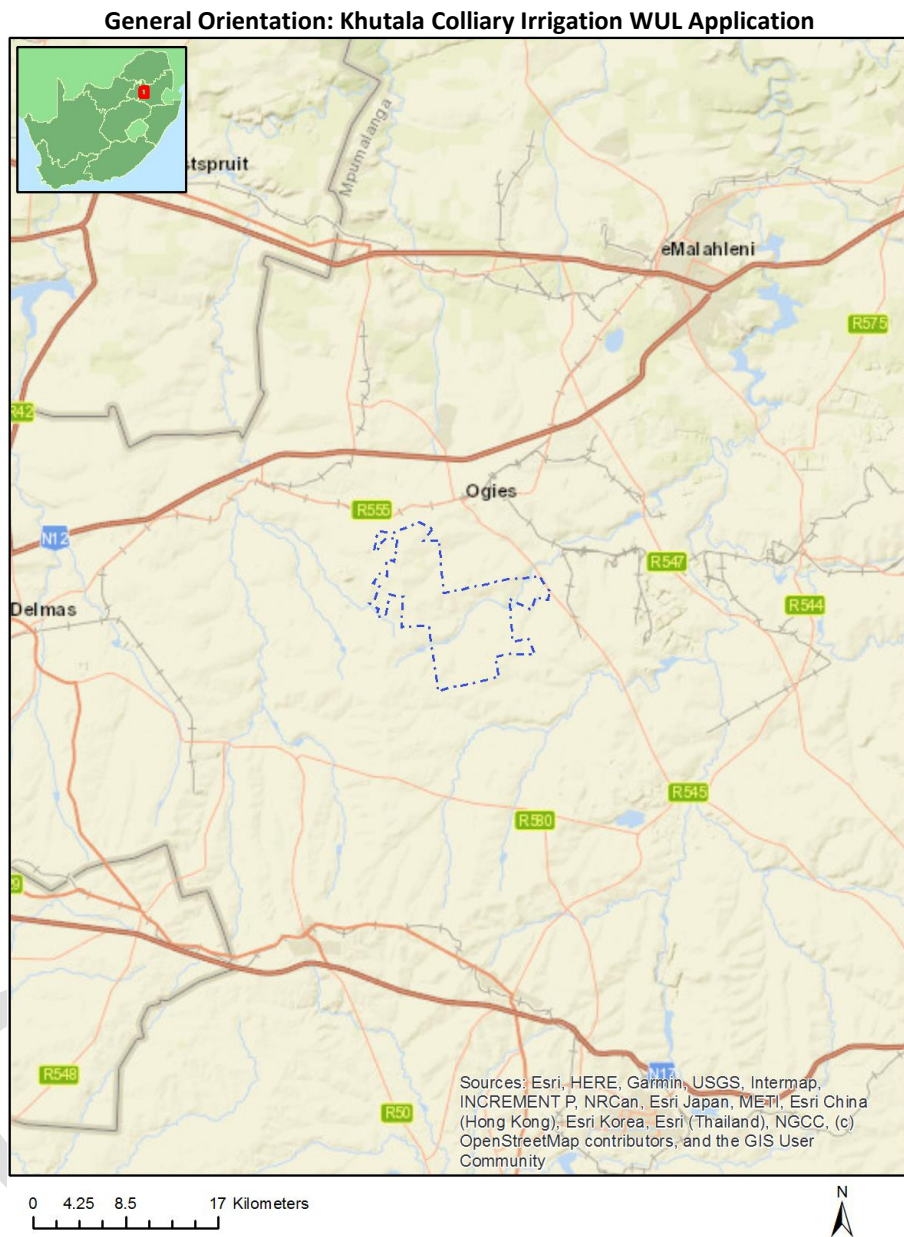
Application Category: Mining|Mining Right

Table of Contents

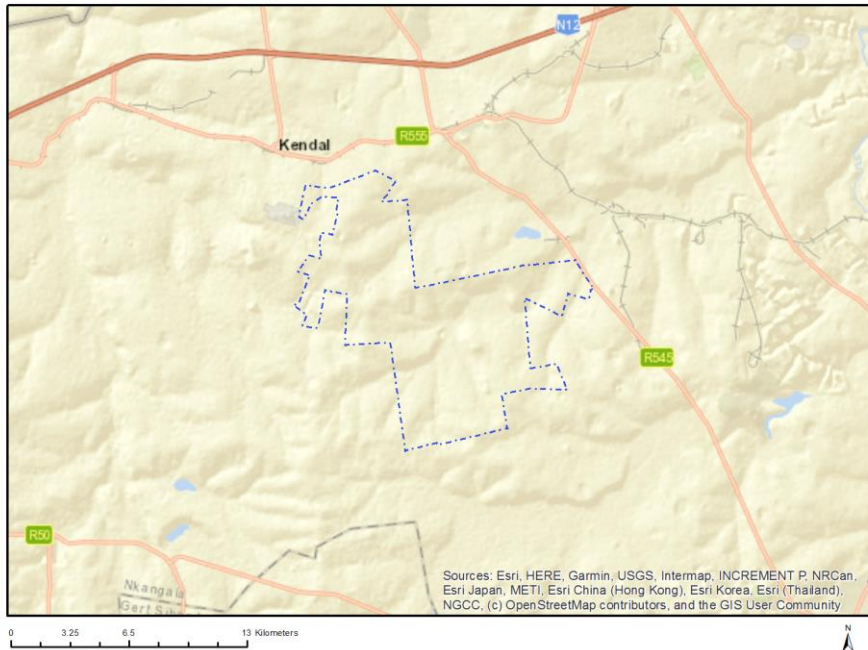
- Proposed Project Location 3
 - Orientation map 1: General location 3
- Map of proposed site and relevant area(s) 4
 - Cadastral details of the proposed site 4
 - Wind and Solar developments with an approved Environmental Authorisation or applications under consideration within 30 km of the proposed area 6
 - Environmental Management Frameworks relevant to the application 6
- Environmental screening results and assessment outcomes 6
 - Relevant development incentives, restrictions, exclusions or prohibitions 7
 - Proposed Development Area Environmental Sensitivity 7
 - Specialist assessments identified 7
- Results of the environmental sensitivity of the proposed area 10
 - MAP OF RELATIVE AGRICULTURE THEME SENSITIVITY 10
 - MAP OF RELATIVE ANIMAL SPECIES THEME SENSITIVITY 11
 - MAP OF RELATIVE AQUATIC BIODIVERSITY THEME SENSITIVITY 12
 - MAP OF RELATIVE ARCHAEOLOGICAL AND CULTURAL HERITAGE THEME SENSITIVITY 13
 - MAP OF RELATIVE CIVIL AVIATION THEME SENSITIVITY 14
 - MAP OF RELATIVE DEFENCE THEME SENSITIVITY 15
 - MAP OF RELATIVE PALEONTOLOGY THEME SENSITIVITY 16
 - MAP OF RELATIVE PLANT SPECIES THEME SENSITIVITY 17
 - MAP OF RELATIVE TERRESTRIAL BIODIVERSITY THEME SENSITIVITY 18

Proposed Project Location

Orientation map 1: General location



Map of proposed site and relevant area(s)



Cadastral details of the proposed site

Property details:

No	Farm Name	Farm/ Erf No	Portion	Latitude	Longitude	Property Type
1	LEEUFONTEIN	219	0	26°7'43.97S	28°57'10.64E	Farm
2	SMITHFIELD	44	0	26°9'57.32S	29°2'45.51E	Farm
3	SCHOONGEZICHT	218	0	26°5'35.28S	28°58'2.31E	Farm
4	SPRINGBOKLAAGTE	33	0	26°8'14.49S	29°4'6.08E	Farm
5	ZONDAGSVLEI	9	0	26°5'50.33S	29°1'0.84E	Farm
6	COLOGNE	34	0	26°8'1.08S	29°0'56.61E	Farm
7	KLIPPOORTJE	32	0	26°8'11.09S	29°6'40.84E	Farm
8	ZONDAGSVLEI	9	24	26°6'50.52S	29°1'10.85E	Farm Portion
9	ZONDAGSVLEI	9	27	26°4'52.34S	29°1'12.87E	Farm Portion
10	KLIPPOORTJE	32	33	26°7'39.32S	29°5'30.29E	Farm Portion
11	SPRINGBOKLAAGTE	33	15	26°8'14.91S	29°4'50.79E	Farm Portion
12	COLOGNE	34	4	26°8'4.86S	29°0'1.32E	Farm Portion
13	ZONDAGSVLEI	9	18	26°5'42.37S	29°0'55.48E	Farm Portion
14	ZONDAGSVLEI	9	20	26°6'45.92S	29°1'46.14E	Farm Portion
15	ZONDAGSVLEI	9	19	26°6'59.44S	29°1'35.62E	Farm Portion
16	ZONDAGSVLEI	9	22	26°6'33.54S	29°1'28.02E	Farm Portion
17	KLIPPOORTJE	32	3	26°6'51.72S	29°6'9.71E	Farm Portion
18	KLIPPOORTJE	32	4	26°7'9.16S	29°6'53.68E	Farm Portion
19	SPRINGBOKLAAGTE	33	2	26°8'18.2S	29°4'20.42E	Farm Portion
20	ZONDAGSVLEI	9	5	26°7'3.14S	29°1'1.43E	Farm Portion
21	ZONDAGSVLEI	9	13	26°7'1.43S	29°1'13.25E	Farm Portion
22	ZONDAGSVLEI	9	9	26°5'21.47S	29°1'11.73E	Farm Portion
23	ZONDAGSVLEI	9	0	26°4'30.55S	29°0'38.88E	Farm Portion
24	SCHOONGEZICHT	218	31	26°5'9.22S	29°0'7.32E	Farm Portion
25	LEEUFONTEIN	219	23	26°7'27.73S	28°58'22.77E	Farm Portion
26	LEEUFONTEIN	219	35	26°7'18.5S	28°59'46.67E	Farm Portion
27	ZONDAGSVLEI	9	7	26°6'8.8S	29°1'10.65E	Farm Portion

28	ZONDAGSVLEI	9	10	26°6'29.34S	29°1'4.67E	Farm Portion
29	ZONDAGSVLEI	9	6	26°6'46.07S	29°0'28.63E	Farm Portion
30	ZONDAGSVLEI	9	12	26°6'43.88S	29°1'0.47E	Farm Portion
31	KLIPPOORTJE	32	13	26°6'52.21S	29°6'2.78E	Farm Portion
32	KLIPPOORTJE	32	32	26°7'38.56S	29°5'59.38E	Farm Portion
33	SPRINGBOKLAAGTE	33	12	26°8'45.06S	29°2'14.07E	Farm Portion
34	COLOGNE	34	3	26°7'24.54S	29°0'56.91E	Farm Portion
35	SMITHFIELD	44	6	26°9'39.91S	29°3'22.9E	Farm Portion
36	ZONDAGSVLEI	9	8	26°5'33.82S	29°1'27.04E	Farm Portion
37	ZONDAGSVLEI	9	21	26°6'20.38S	29°1'40.7E	Farm Portion
38	ZONDAGSVLEI	9	4	26°5'54.55S	29°1'41.62E	Farm Portion
39	KLIPPOORTJE	32	28	26°7'21.93S	29°6'50.61E	Farm Portion
40	SPRINGBOKLAAGTE	33	3	26°7'35.62S	29°2'45.28E	Farm Portion
41	COLOGNE	34	0	26°8'3.58S	29°0'55.44E	Farm Portion
42	SMITHFIELD	44	7	26°7'57.59S	29°2'46.52E	Farm Portion
43	SMITHFIELD	44	1	26°10'40.9S	29°3'31.84E	Farm Portion
44	ZONDAGSVLEI	9	2	26°5'27.72S	29°0'38.52E	Farm Portion
45	KLIPPOORTJE	32	12	26°7'0.36S	29°6'26.82E	Farm Portion
46	KLIPPOORTJE	32	11	26°8'58.34S	29°5'48.07E	Farm Portion
47	SMITHFIELD	44	2	26°10'32.67S	29°2'0.03E	Farm Portion
48	SCHOONGEZICHT	218	5	26°4'46.54S	28°59'50.7E	Farm Portion
49	SCHOONGEZICHT	218	22	26°5'35.85S	29°0'2.96E	Farm Portion
50	SCHOONGEZICHT	218	45	26°6'6.38S	28°59'47.65E	Farm Portion
51	SCHOONGEZICHT	218	7	26°5'3.57S	29°0'26.27E	Farm Portion
52	SPRINGBOKLAAGTE	33	16	26°7'30.38S	29°4'53.36E	Farm Portion
53	SMITHFIELD	44	5	26°9'8.07S	29°1'31.41E	Farm Portion
54	SCHOONGEZICHT	218	3	26°6'43.23S	28°58'48.77E	Farm Portion
55	SCHOONGEZICHT	218	16	26°5'6.64S	28°59'50.13E	Farm Portion
56	SCHOONGEZICHT	218	19	26°5'27.35S	29°0'22.1E	Farm Portion
57	ZONDAGSVLEI	9	14	26°5'14.2S	29°1'41.61E	Farm Portion
58	ZONDAGSVLEI	9	15	26°5'14.23S	29°1'21.13E	Farm Portion
59	ZONDAGSVLEI	9	16	26°5'2.38S	29°1'23.68E	Farm Portion
60	ZONDAGSVLEI	9	11	26°6'38.67S	29°1'6.28E	Farm Portion
61	ZONDAGSVLEI	9	23	26°6'49.49S	29°1'16.79E	Farm Portion
62	KLIPPOORTJE	32	1	26°9'42.51S	29°5'55.77E	Farm Portion
63	SPRINGBOKLAAGTE	33	9	26°9'2.83S	29°5'7.9E	Farm Portion
64	SMITHFIELD	44	0	26°8'41.75S	29°3'13.86E	Farm Portion
65	SMITHFIELD	44	3	26°11'7.25S	29°1'25.93E	Farm Portion
66	LEEUFONTEIN	219	12	26°8'18.14S	28°58'22.95E	Farm Portion
67	LEEUFONTEIN	219	24	26°7'43.82S	28°59'33.85E	Farm Portion
68	SCHOONGEZICHT	218	30	26°5'30.19S	29°0'3.24E	Farm Portion
69	SCHOONGEZICHT	218	20	26°4'41.11S	28°59'1.68E	Farm Portion
70	LEEUFONTEIN	219	0	26°7'39.13S	28°58'57.91E	Farm Portion
71	SMITHFIELD	44	4	26°9'24.11S	29°2'13.01E	Farm Portion
72	SCHOONGEZICHT	218	39	26°5'27.8S	28°58'1.18E	Farm Portion
73	SCHOONGEZICHT	218	36	26°6'35.04S	28°59'2.02E	Farm Portion
74	SCHOONGEZICHT	218	40	26°6'52.39S	28°59'35.48E	Farm Portion

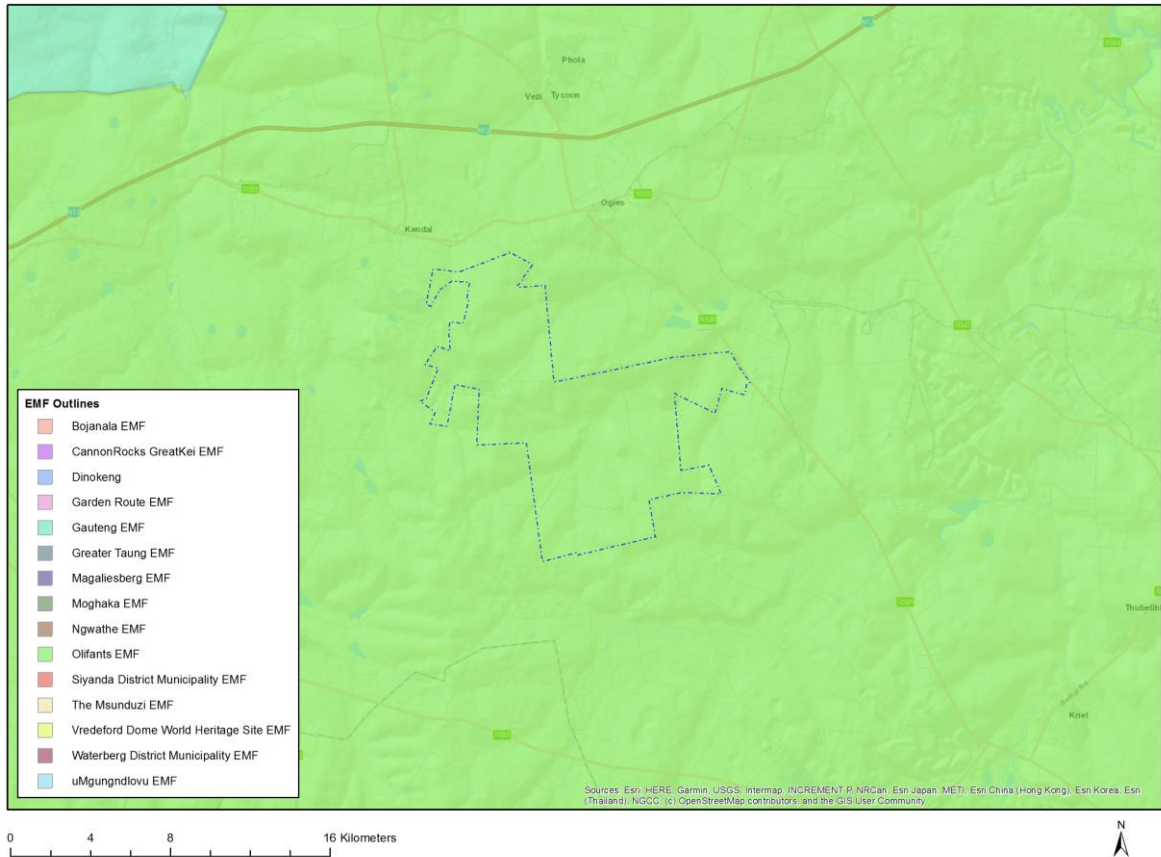
Development footprint¹ vertices:
No development footprint(s) specified.

¹ “development footprint”, means the area within the site on which the development will take place and includes all ancillary developments for example roads, power lines, boundary walls, paving etc. which require vegetation clearance or which will be disturbed and for which the application has been submitted.

Wind and Solar developments with an approved Environmental Authorisation or applications under consideration within 30 km of the proposed area

No	EIA Reference No	Classification	Status of application	Distance from proposed area (km)
1	14/12/16/3/3/2/759	Solar PV	Approved	29.6

Environmental Management Frameworks relevant to the application



Environmental Management Framework	LINK
Olifants EMF	https://screening.environment.gov.za/ScreeningDownloads/EMF/Zone_4_6, 67, 78, 80, 92, 103, 122, 129.pdf

Environmental screening results and assessment outcomes

The following sections contain a summary of any development incentives, restrictions, exclusions or prohibitions that apply to the proposed development site as well as the most environmental sensitive features on the site based on the site sensitivity screening results for the application classification that was selected. The application classification selected for this report is:

Mining | Mining Right.

Relevant development incentives, restrictions, exclusions or prohibitions

The following development incentives, restrictions, exclusions or prohibitions and their implications that apply to this site are indicated below.

Incentive, restriction or prohibition	Implication
Strategic Transmission Corridor-International corridor	https://screening.environment.gov.za/ScreeningDownloads/DevelopmentZones/Combined_EGI.pdf
Air Quality-Highveld Priority Area	https://screening.environment.gov.za/ScreeningDownloads/DevelopmentZones/HIGHVELD_PRIORITY_AREA_AQMP.pdf
Renewable energy development zones 9-Emalahleni	https://screening.environment.gov.za/ScreeningDownloads/DevelopmentZones/Combined_REDZ.pdf
Strategic Gas Pipeline Corridors-Phase 8: Rompco Pipeline Corridor	https://screening.environment.gov.za/ScreeningDownloads/DevelopmentZones/Combined_GAS.pdf

Proposed Development Area Environmental Sensitivity

The following summary of the development site environmental sensitivities is identified. Only the highest environmental sensitivity is indicated. The footprint environmental sensitivities for the proposed development footprint as identified, are indicative only and must be verified on site by a suitably qualified person before the specialist assessments identified below can be confirmed.

Theme	Very High sensitivity	High sensitivity	Medium sensitivity	Low sensitivity
Agriculture Theme	X			
Animal Species Theme		X		
Aquatic Biodiversity Theme	X			
Archaeological and Cultural Heritage Theme	X			
Civil Aviation Theme		X		
Defence Theme				X
Paleontology Theme	X			
Plant Species Theme			X	
Terrestrial Biodiversity Theme	X			

Specialist assessments identified

Based on the selected classification, and the known impacts associated with the proposed development, the following list of specialist assessments have been identified for inclusion in the assessment report. It is the responsibility of the EAP to confirm this list and to motivate in the assessment report, the reason for not including any of the identified specialist study including the provision of photographic evidence of the site situation.

No	Specialist assessment	Assessment Protocol
1	Agricultural Impact Assessment	https://screening.environment.gov.za/ScreeningDownloads/AssessmentProtocols/Gazetted_General_Agriculture_Assessment_Protocols.pdf

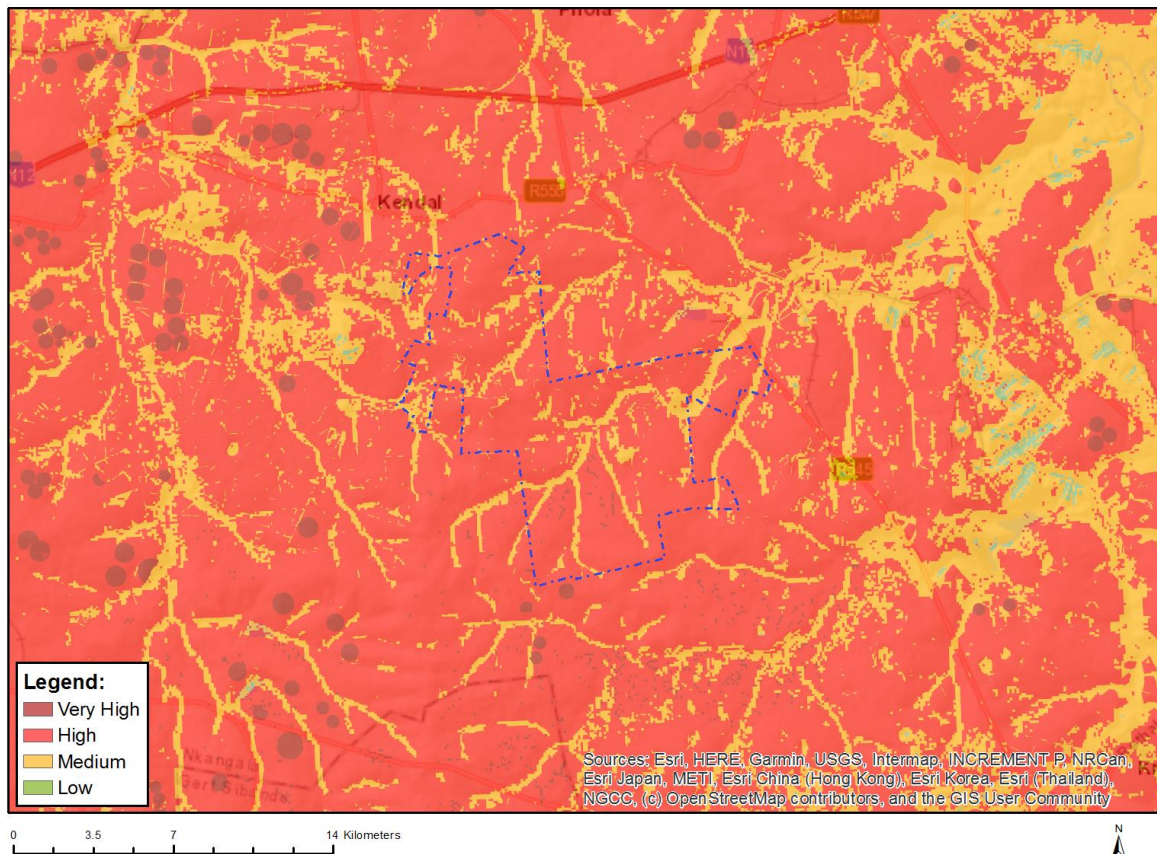
2	Landscape/Visual Impact Assessment	https://screening.environment.gov.za/ScreeningDownloads/AssessmentProtocols/Gazetted_General_Requirement_Assessment_Protocols.pdf
3	Archaeological and Cultural Heritage Impact Assessment	https://screening.environment.gov.za/ScreeningDownloads/AssessmentProtocols/Gazetted_General_Requirement_Assessment_Protocols.pdf
4	Palaeontology Impact Assessment	https://screening.environment.gov.za/ScreeningDownloads/AssessmentProtocols/Gazetted_General_Requirement_Assessment_Protocols.pdf
5	Terrestrial Biodiversity Impact Assessment	https://screening.environment.gov.za/ScreeningDownloads/AssessmentProtocols/Gazetted_Terrestrial_Biodiversity_Assessment_Protocols.pdf
6	Aquatic Biodiversity Impact Assessment	https://screening.environment.gov.za/ScreeningDownloads/AssessmentProtocols/Gazetted_Aquatic_Biodiversity_Assessment_Protocols.pdf
7	Hydrology Assessment	https://screening.environment.gov.za/ScreeningDownloads/AssessmentProtocols/Gazetted_General_Requirement_Assessment_Protocols.pdf
8	Noise Impact Assessment	https://screening.environment.gov.za/ScreeningDownloads/AssessmentProtocols/Gazetted_Noise_Impacts_Assessment_Protocol.pdf
9	Radioactivity Impact Assessment	https://screening.environment.gov.za/ScreeningDownloads/AssessmentProtocols/Gazetted_General_Requirement_Assessment_Protocols.pdf
10	Traffic Impact Assessment	https://screening.environment.gov.za/ScreeningDownloads/AssessmentProtocols/Gazetted_General_Requirement_Assessment_Protocols.pdf
11	Geotechnical Assessment	https://screening.environment.gov.za/ScreeningDownloads/AssessmentProtocols/Gazetted_General_Requirement_Assessment_Protocols.pdf
12	Climate Impact Assessment	https://screening.environment.gov.za/ScreeningDownloads/AssessmentProtocols/Gazetted_General_Requirement_Assessment_Protocols.pdf
13	Health Impact Assessment	https://screening.environment.gov.za/ScreeningDownloads/AssessmentProtocols/Gazetted_General_Requirement_Assessment_Protocols.pdf
14	Socio-Economic Assessment	https://screening.environment.gov.za/ScreeningDownloads/AssessmentProtocols/Gazetted_General_Requirement_Assessment_Protocols.pdf
15	Ambient Air Quality Impact Assessment	https://screening.environment.gov.za/ScreeningDownloads/AssessmentProtocols/Gazetted_General_Requirement_Assessment_Protocols.pdf
16	Seismicity Assessment	https://screening.environment.gov.za/ScreeningDownloads/AssessmentProtocols/Gazetted_General_Requirement_Assessment_Protocols.pdf
17	Plant Species Assessment	https://screening.environment.gov.za/ScreeningDownloads/AssessmentProtocols/Gazetted_Plant_Species_Assessment_Protocols.pdf
18	Animal Species Assessment	https://screening.environment.gov.za/ScreeningDownloads/AssessmentProtocols/Gazetted_Animal_Species_Assessment_Protocols.pdf

OFFICIAL

Results of the environmental sensitivity of the proposed area.

The following section represents the results of the screening for environmental sensitivity of the proposed site for relevant environmental themes associated with the project classification. It is the duty of the EAP to ensure that the environmental themes provided by the screening tool are comprehensive and complete for the project. Refer to the disclaimer.

MAP OF RELATIVE AGRICULTURE THEME SENSITIVITY

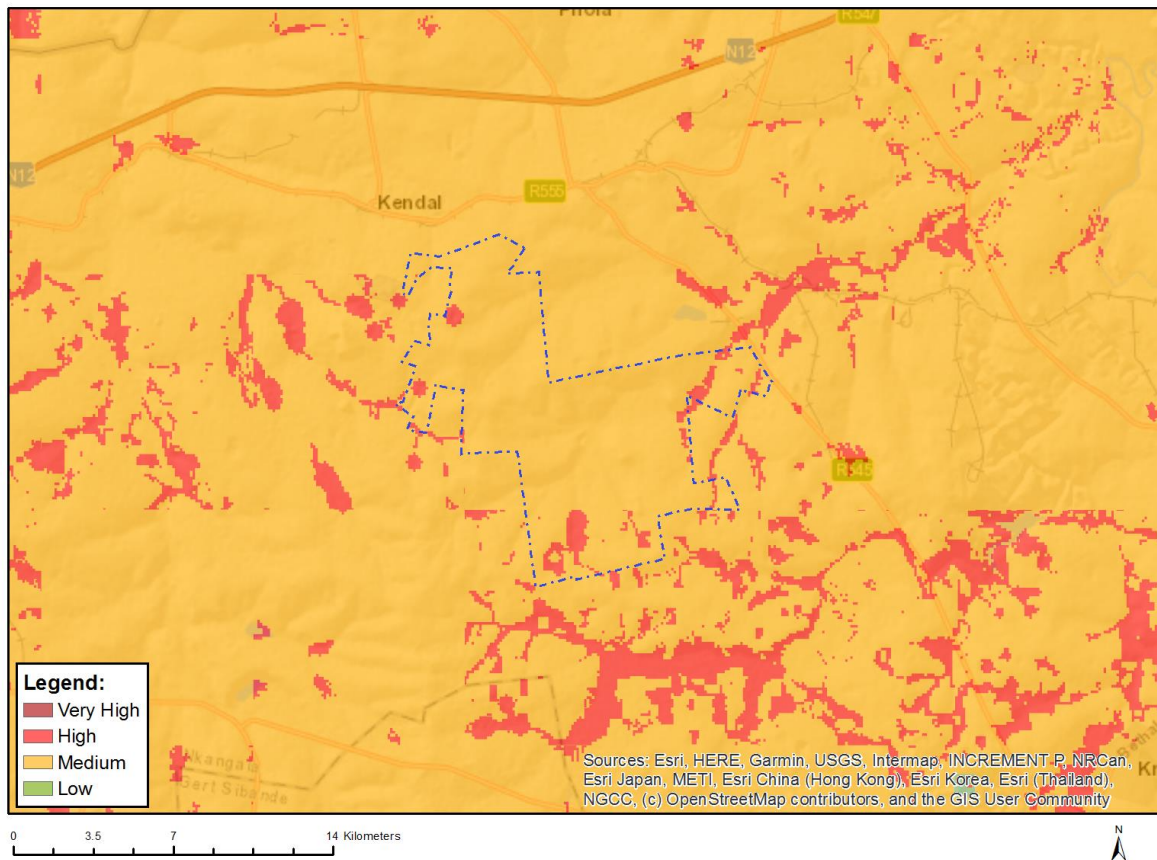


Very High sensitivity	High sensitivity	Medium sensitivity	Low sensitivity
X			

Sensitivity Features:

Sensitivity	Feature(s)
High	Land capability;09. Moderate-High/10. Moderate-High
High	Annual Crop Cultivation / Planted Pastures Rotation;Land capability;06. Low-Moderate/07. Low-Moderate/08. Moderate
High	Annual Crop Cultivation / Planted Pastures Rotation;Land capability;09. Moderate-High/10. Moderate-High
High	Old Fields;Land capability;06. Low-Moderate/07. Low-Moderate/08. Moderate
High	Old Fields;Land capability;09. Moderate-High/10. Moderate-High
Medium	Land capability;06. Low-Moderate/07. Low-Moderate/08. Moderate
Very High	Land capability;11. High/12. High-Very high/13. High-Very high/14. Very high/15. Very high
Very High	Annual Crop Cultivation / Planted Pastures Rotation;Land capability;11. High/12. High-Very high/13.

MAP OF RELATIVE ANIMAL SPECIES THEME SENSITIVITY



Where only a sensitive plant unique number or sensitive animal unique number is provided in the screening report and an assessment is required, the environmental assessment practitioner (EAP) or specialist is required to email SANBI at eiadatarequests@sanbi.org.za listing all sensitive species with their unique identifiers for which information is required. The name has been withheld as the species may be prone to illegal harvesting and must be protected. SANBI will release the actual species name after the details of the EAP or specialist have been documented.

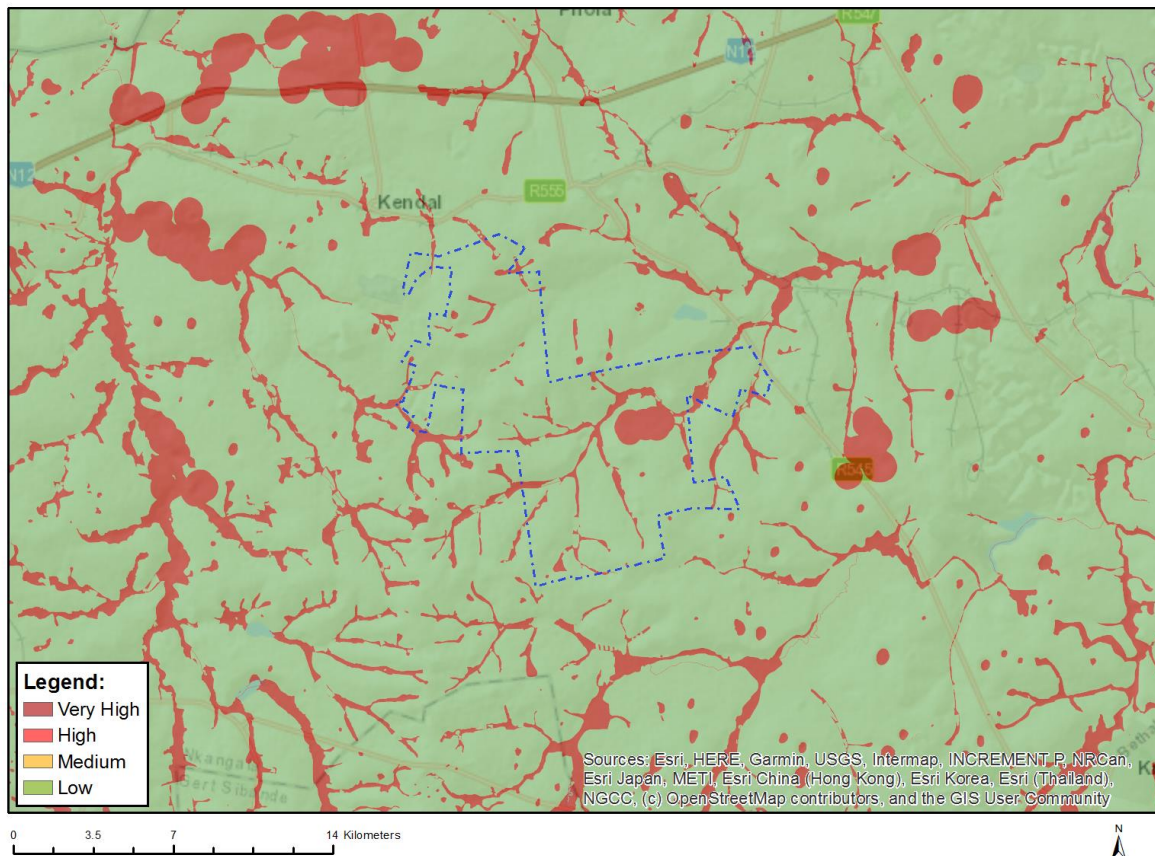
Very High sensitivity	High sensitivity	Medium sensitivity	Low sensitivity
	X		

Sensitivity Features:

Sensitivity	Feature(s)
High	Aves-Tyto capensis
High	Aves-Circus ranivorus
High	Aves-Hydroprogne caspia
High	Aves-Mycteria ibis
Medium	Aves-Tyto capensis
Medium	Aves-Hydroprogne caspia
Medium	Aves-Sagittarius serpentarius
Medium	Aves-Circus ranivorus
Medium	Aves-Eupodotis senegalensis
Medium	Mammalia-Chrysospalax villosus
Medium	Mammalia-Crocudura maquassiensis

Medium	Mammalia-Dasymys robertsii
Medium	Mammalia-Hydrictis maculicollis
Medium	Mammalia-Ourebia ourebi ourebi

MAP OF RELATIVE AQUATIC BIODIVERSITY THEME SENSITIVITY

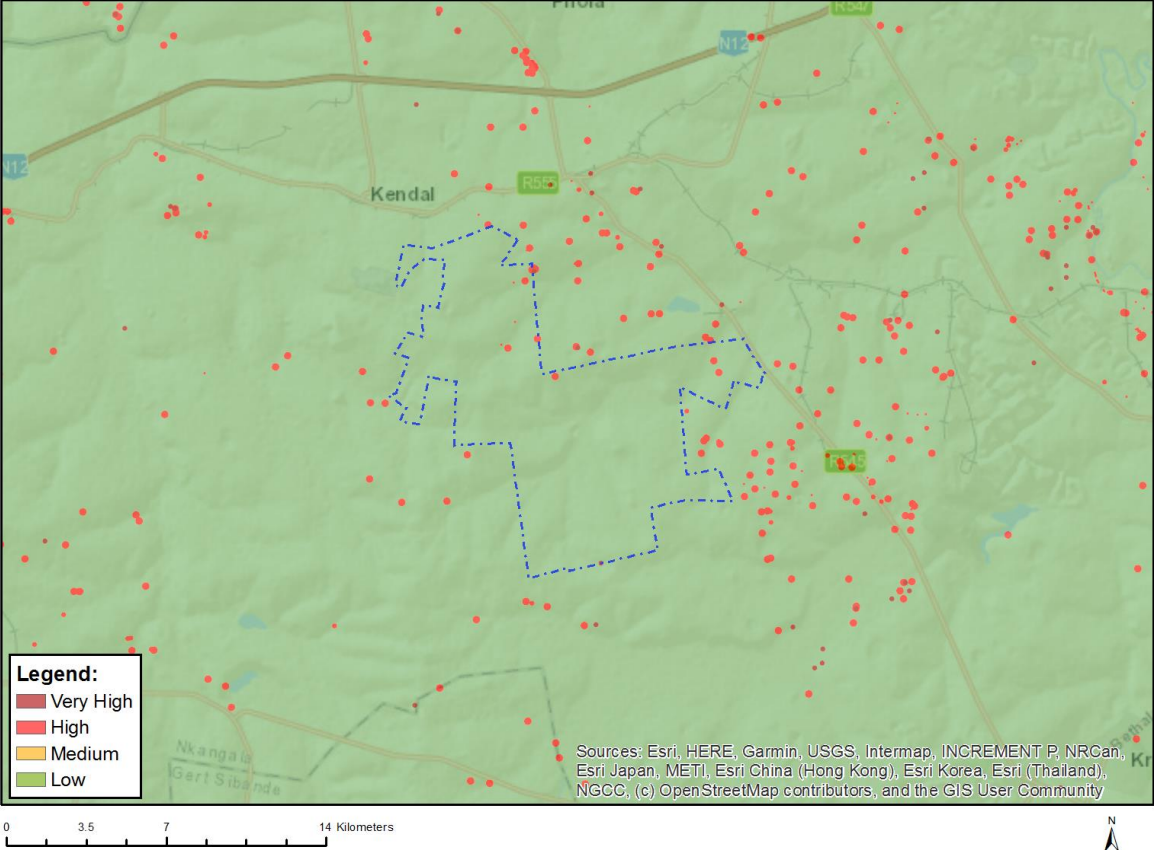


Very High sensitivity	High sensitivity	Medium sensitivity	Low sensitivity
X			

Sensitivity Features:

Sensitivity	Feature(s)
Low	Low sensitivity
Very High	CBA: Wetlands
Very High	ESA: Wetland clusters
Very High	ESA: Wetlands
Very High	Rivers_D
Very High	Rivers_Z
Very High	Wetlands_Mesic Highveld Grassland Bioregion (Depression)
Very High	Wetlands_Mesic Highveld Grassland Bioregion (Floodplain)
Very High	Wetlands_Mesic Highveld Grassland Bioregion (Seep)
Very High	Wetlands_Mesic Highveld Grassland Bioregion (Valley-bottom)

MAP OF RELATIVE ARCHAEOLOGICAL AND CULTURAL HERITAGE THEME SENSITIVITY

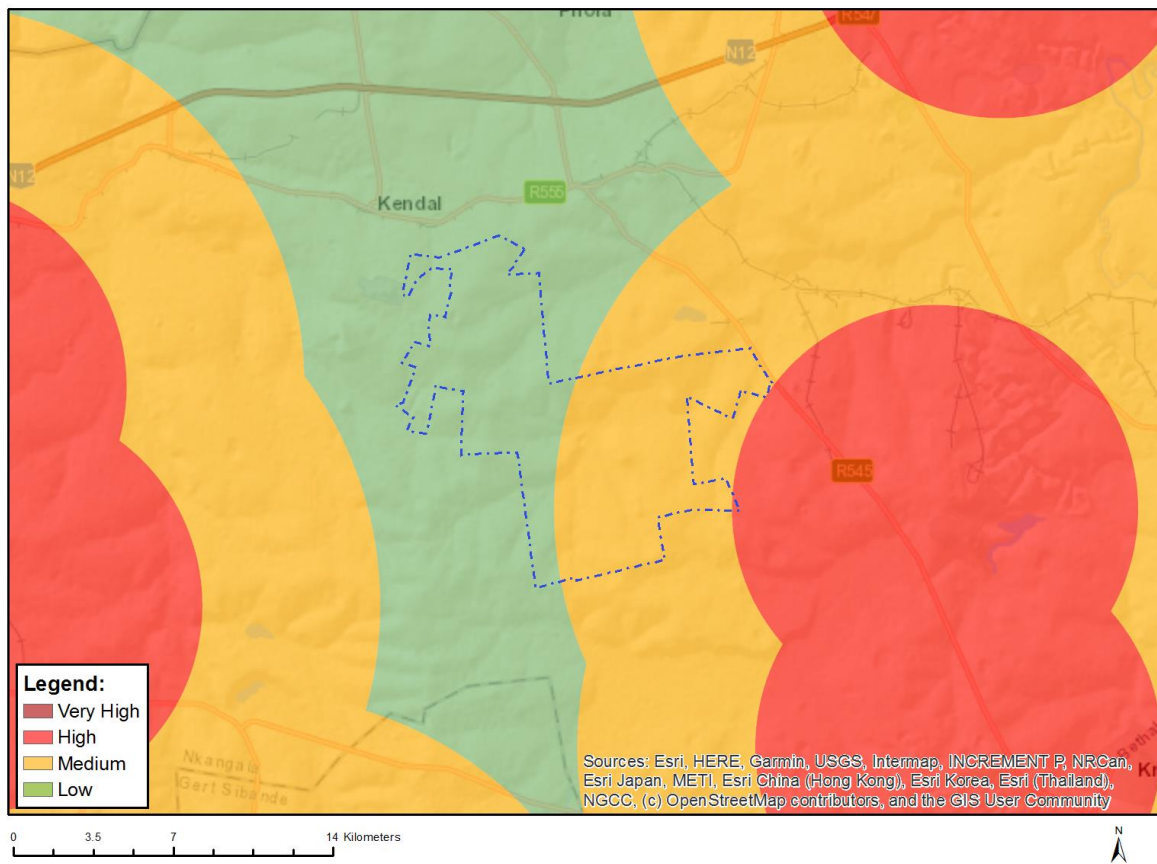


Very High sensitivity	High sensitivity	Medium sensitivity	Low sensitivity
X			

Sensitivity Features:

Sensitivity	Feature(s)
High	Within 150m of a Grade IIIa Heritage site
High	Within 50m of a Grade IIIc Heritage site
Low	Low sensitivity
Very High	Within 100m of an Ungraded Heritage site

MAP OF RELATIVE CIVIL AVIATION THEME SENSITIVITY

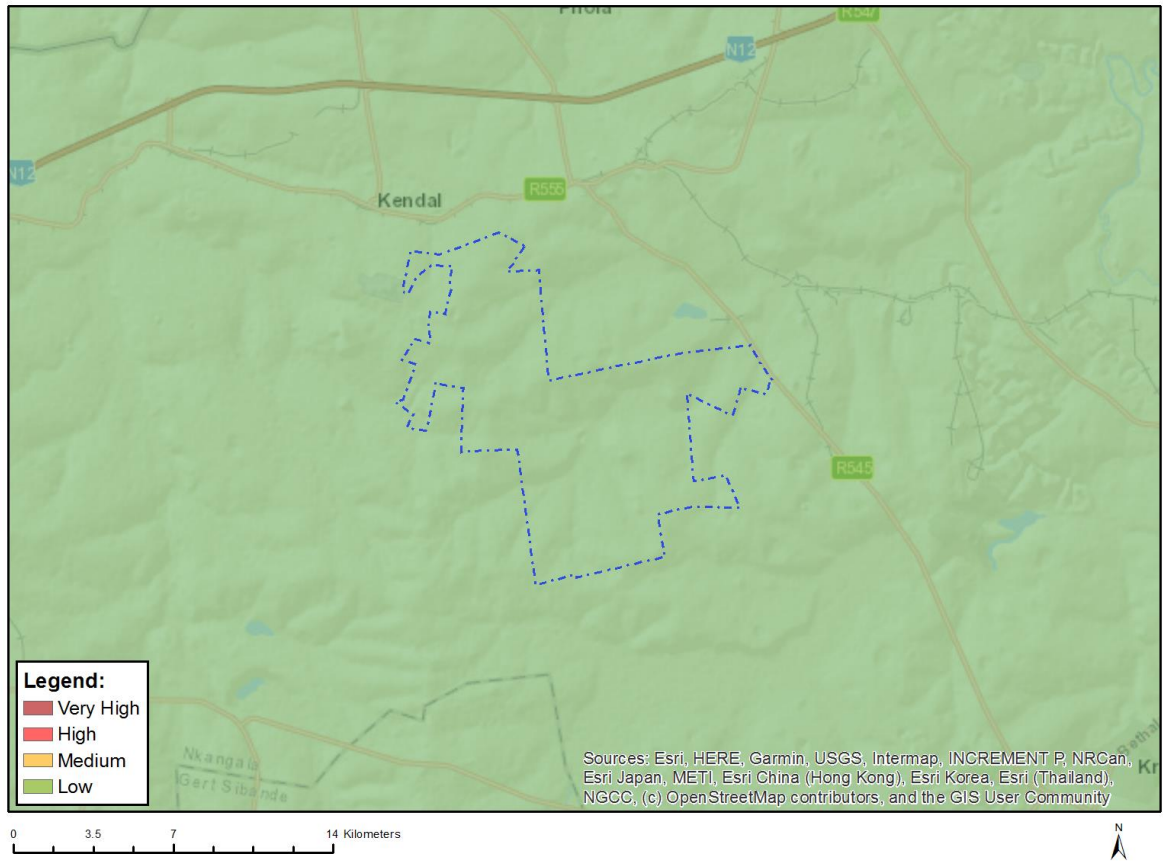


Very High sensitivity	High sensitivity	Medium sensitivity	Low sensitivity
	X		

Sensitivity Features:

Sensitivity	Feature(s)
High	Within 8 km of other civil aviation aerodrome
Low	Low sensitivity
Medium	Between 8 and 15 km of other civil aviation aerodrome

MAP OF RELATIVE DEFENCE THEME SENSITIVITY

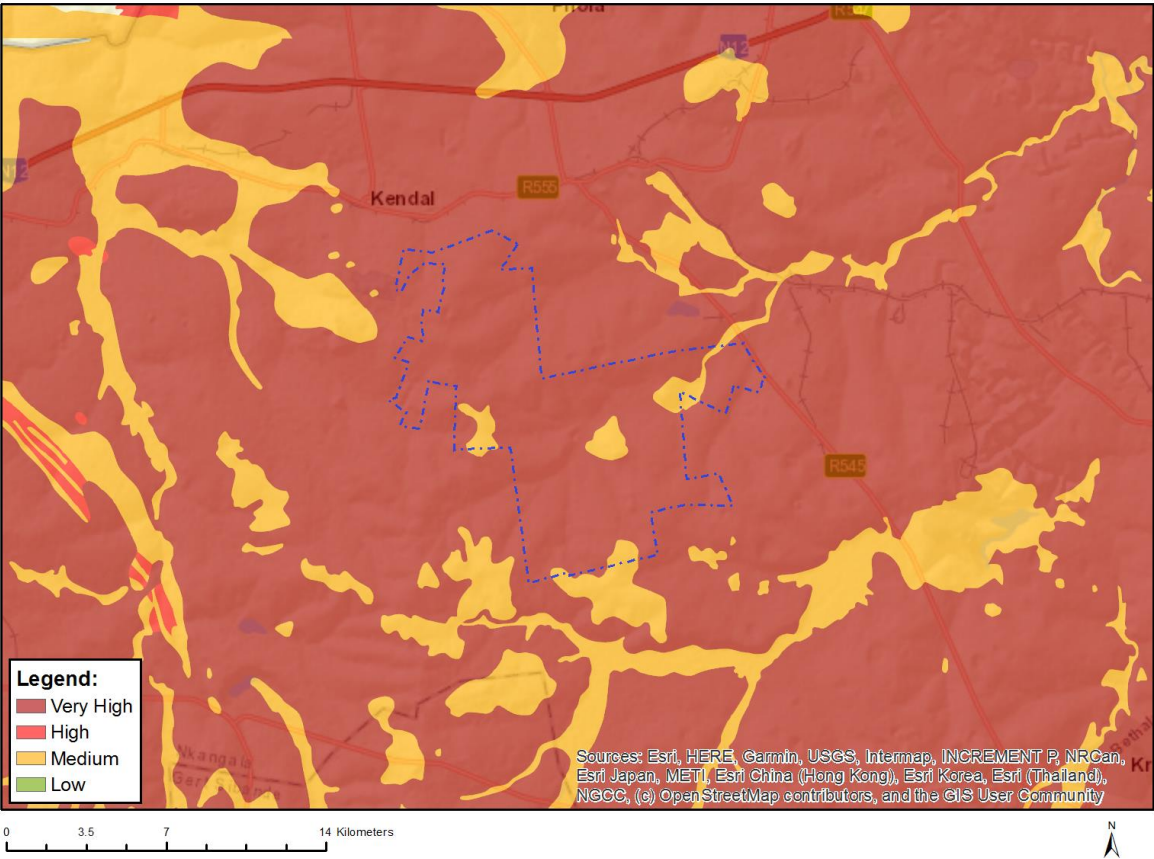


Very High sensitivity	High sensitivity	Medium sensitivity	Low sensitivity
			X

Sensitivity Features:

Sensitivity	Feature(s)
Low	Low Sensitivity

MAP OF RELATIVE PALEONTOLOGY THEME SENSITIVITY

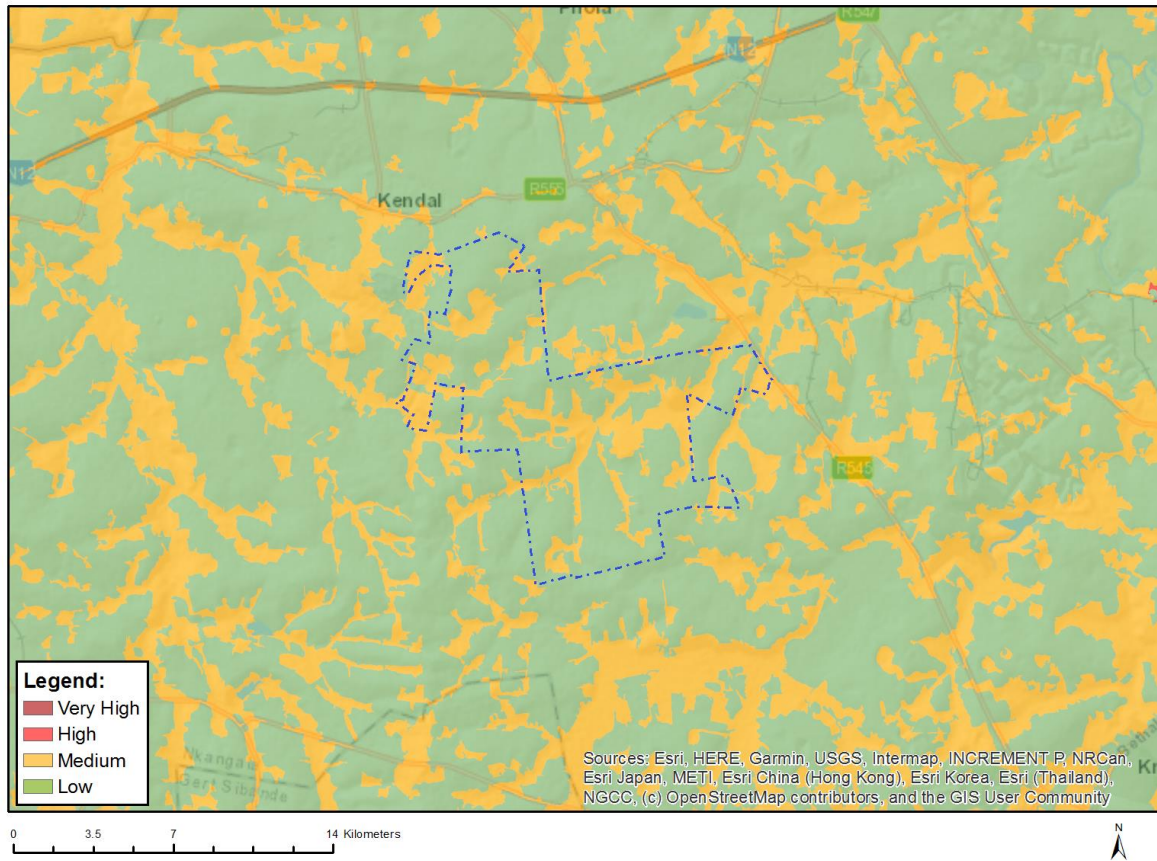


Very High sensitivity	High sensitivity	Medium sensitivity	Low sensitivity
X			

Sensitivity Features:

Sensitivity	Feature(s)
Low	Features with a Low paleontological sensitivity
Medium	Features with a Medium paleontological sensitivity
Very High	Features with a Very High paleontological sensitivity

MAP OF RELATIVE PLANT SPECIES THEME SENSITIVITY



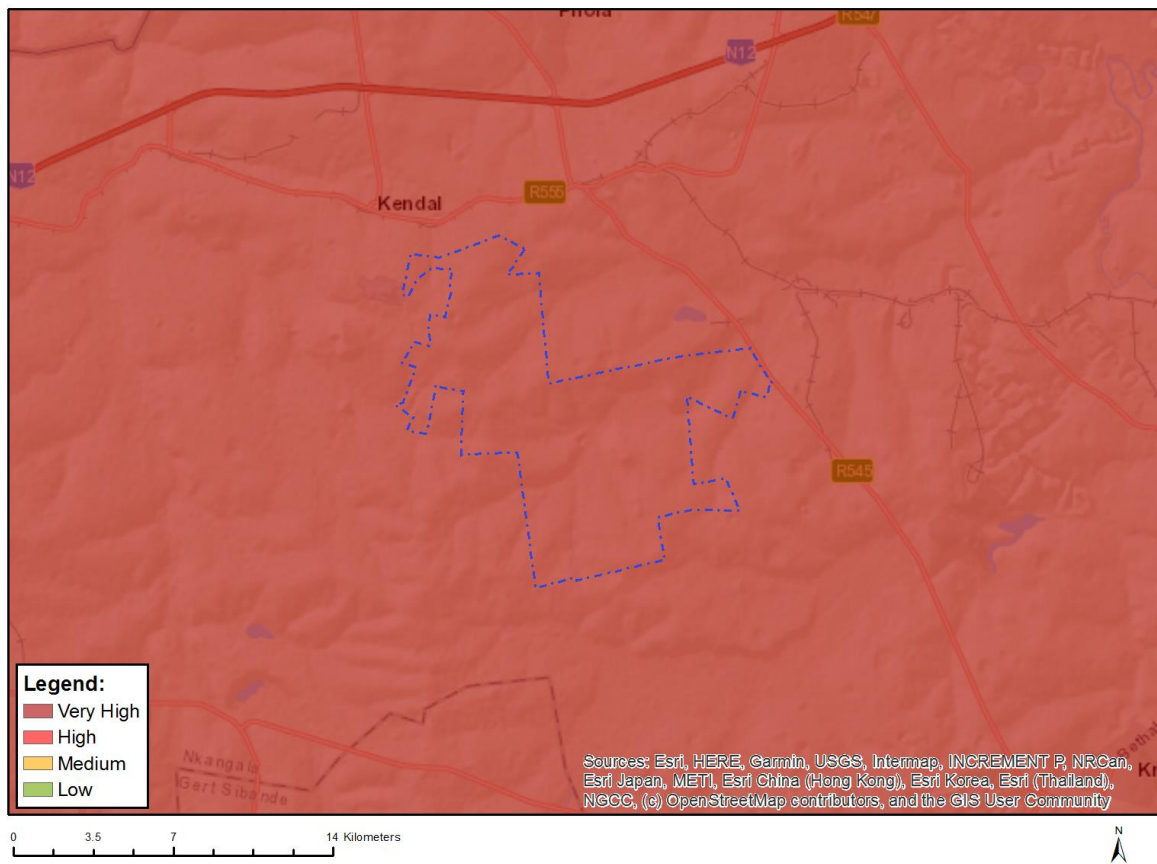
Where only a sensitive plant unique number or sensitive animal unique number is provided in the screening report and an assessment is required, the environmental assessment practitioner (EAP) or specialist is required to email SANBI at eiadatarequests@sanbi.org.za listing all sensitive species with their unique identifiers for which information is required. The name has been withheld as the species may be prone to illegal harvesting and must be protected. SANBI will release the actual species name after the details of the EAP or specialist have been documented.

Very High sensitivity	High sensitivity	Medium sensitivity	Low sensitivity
		X	

Sensitivity Features:

Sensitivity	Feature(s)
Low	Low Sensitivity
Medium	Sensitive species 601
Medium	Sensitive species 691
Medium	<i>Pachycarpus suaveolens</i>
Medium	<i>Brachycorythis conica</i> subsp. <i>transvaalensis</i>

MAP OF RELATIVE TERRESTRIAL BIODIVERSITY THEME SENSITIVITY



Very High sensitivity	High sensitivity	Medium sensitivity	Low sensitivity
X			

Sensitivity Features:

Sensitivity	Feature(s)
Very High	CBA 2
Very High	National Protected Area Expansion Strategy (NPAES)
Very High	EN_ Eastern Highveld Grassland